



UN Tourism

International Tourism Highlights

2024 Edition

https://www.e-unwto.org/doi/book/10.18111/9789284425808 - José Luis Vázquez Luna <jvazquez@anahuac.mx> - Thursday, January 16, 2025 3:09:20 PM - UNIVERSIDAD ANAHUAC - Escuela de Administración Turística IP Address:201.141.21.163

Table of contents

| | |
|---|-----------|
| Key Insights | 3 |
| Tourism: An engine of growth and development | 4 |
| 2020-2022: An unprecedented crisis | 5 |
| 2023: International tourism bounces back | 6 |
| Regional results in 2023 | 8 |
| World | 11 |
| Europe | 11 |
| Asia and the Pacific | 12 |
| Americas | 12 |
| Africa | 13 |
| Middle East | 13 |
| Economic contribution of tourism | 14 |
| World's top destinations in 2023 | 16 |
| Outbound tourism | 18 |
| Purpose of visit and mode of transport | 19 |
| Statistical Annex | 20 |
| Methodological notes | 27 |

Copyright © 2024, World Tourism Organization (UN Tourism)
International Tourism Highlights, 2024 Edition

Photo credits:

Cover: © Shvets Anna | Pexels.com

Page 7 and 16: © Quang Nguyen Vinh | Pexels.com

ISBN (printed version): 978-92-844-2579-2

ISBN (electronic version): 978-92-844-2580-8

DOI: [10.18111/9789284425808](https://doi.org/10.18111/9789284425808)

Published by UN Tourism, Madrid, Spain

First published: November 2024

All rights reserved.

The designations employed and the presentation of material in this publication do not imply the expression of any opinions whatsoever on the part of the Secretariat of UN Tourism concerning the legal status of any country, territory, city or area, or of its authorities or concerning the delimitation of its frontiers or boundaries.

UN Tourism does not guarantee the accuracy of the data included in this publication and accepts no responsibility for any consequence of their use. The mention of specific companies or products of manufacturers does not imply that they are endorsed or recommended by UN Tourism in preference to others of a similar nature that are not mentioned.

World Tourism Organization (UN Tourism)
 Calle del Poeta Joan Maragall, 42
 28020 Madrid, Spain

Tel.: (+34) 915 67 81 00
 Website: www.unwto.org
 E-mail: info@unwto.org

UN Tourism initiating and authoring department:
 Market Intelligence, Policies and Competitiveness

Editorial team, design and layout
 UN Tourism

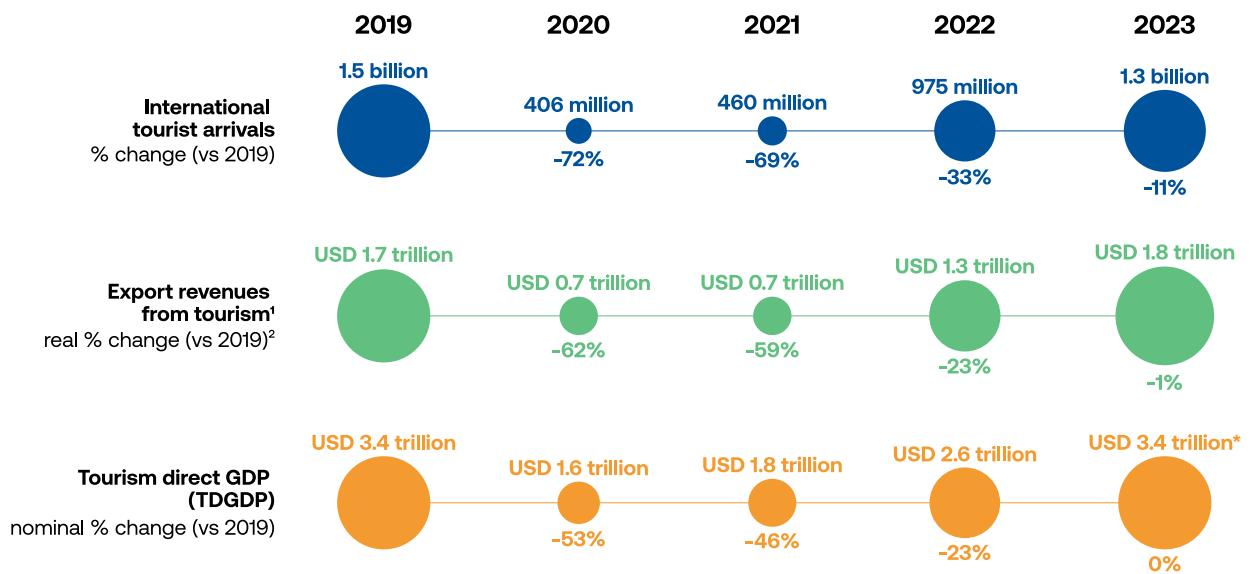
Citation:

World Tourism Organization (2024), *International Tourism Highlights, 2024 Edition*, November 2024, UN Tourism, Madrid, DOI: <https://doi.org/10.18111/9789284425808>.

Key Insights

- International tourism rebounded strongly in 2023 to reach 1.3 billion arrivals, about 89% of the pre-pandemic figure (-11% compared to 2019) after three years of border shutdowns and travel restrictions to contain the COVID-19 pandemic.
- Large pent-up demand and the re-opening of several Asian destinations and markets drove the rebound in travel numbers in 2023, aided by increased air connectivity and visa facilitation.
- Destinations worldwide earned USD 1.5 trillion in international tourism receipts, 98% of the pre-pandemic value (-2% versus 2019) bringing total export revenues from tourism (including receipts and passenger transport services) to USD 1.8 trillion in 2023, above the 2019 value in current US dollars, though 99% in real terms (-1% over 2019).
- The economic contribution of tourism reached an estimated USD 3.4 trillion in 2023, measured in tourism direct gross domestic product (TDGDP), equivalent to 3% of global GDP, slightly below the 4% share achieved in 2019.
- The Middle East recorded the best relative results by region, with arrivals climbing 31% above pre-pandemic levels to 93 million, and receipts growing 45% to USD 137 billion, making it the only region to exceed 2019 levels.
- Europe, the world’s largest destination region saw 707 million international arrivals in 2023, about 95% of the 2019 figure. Africa recorded 96% of its pre-pandemic arrivals and the Americas 91% while Asia and the Pacific recovered 65%, due to slower re-opening of borders and lifting of restrictions.
- Our projections point to a full recovery of international arrivals in 2024, following a 96% recovery in the first seven months of 2024 (-4% versus January-July 2019).

Figure 1: Global tourism indicators, 2019–2023



Source: UN Tourism

¹ Revenues include international tourism receipts and passenger transport fees.

² In local currencies at constant prices.

*Provisional data

Data as of September 2024

Tourism: An engine of growth and development

In the decades leading up to 2019, tourism saw continued expansion and diversification despite occasional shocks, to become one of the largest and fastest-growing economic sectors in the world. After the severe disruption caused by the COVID-19 pandemic starting in 2020, international tourism largely recovered by 2023, resuming its role as a major engine of economic growth and job creation, supporting destinations in both advanced and emerging market economies.

As international travel continues to recover and expand, it is ever more essential to rethink tourism policy and management. Governments at the national and local levels, as well as all sector stakeholders are called upon to adapt and enhance tourism policies and management to ensure that local communities and the planet are central to tourism development.

2023 - strong recovery of international tourism

- 1.3 billion arrivals recorded worldwide in 2023, an 89% recovery compared to 2019, when arrivals reached 1.5 billion.
- USD 1.5 trillion in international tourism receipts, a 98% recovery in real terms.
- The rebound reflects the sector's capacity to recover despite the unprecedented health, economic and policy challenges.
- Before the pandemic, arrivals grew an average 5% per year between 2009 and 2019, or 64% on aggregate.

A key economic sector

- Tourism output amounted to USD 3.4 trillion in 2023, directly accounting for 3% of world GDP, measured in tourism direct gross domestic product (TDGDP).
- Before the pandemic (2019), tourism represented 4% of global GDP.

A major export category and source of foreign exchange

- USD 1.8 trillion in export revenues from international tourism in 2023, equivalent to 23% of the world's trade in services and 6% of overall exports of goods and services.
- In 2019, international tourism accounted for 28% of global trade in services and 7% of overall exports.
- Export revenues from tourism account for over 50% of total exports in 23 destinations (as of 2019), mostly small island developing states (SIDS).
- Tourism is often the main export category for many developing countries, creating much needed employment and opportunities for development.

Sustains millions of livelihoods and small businesses.

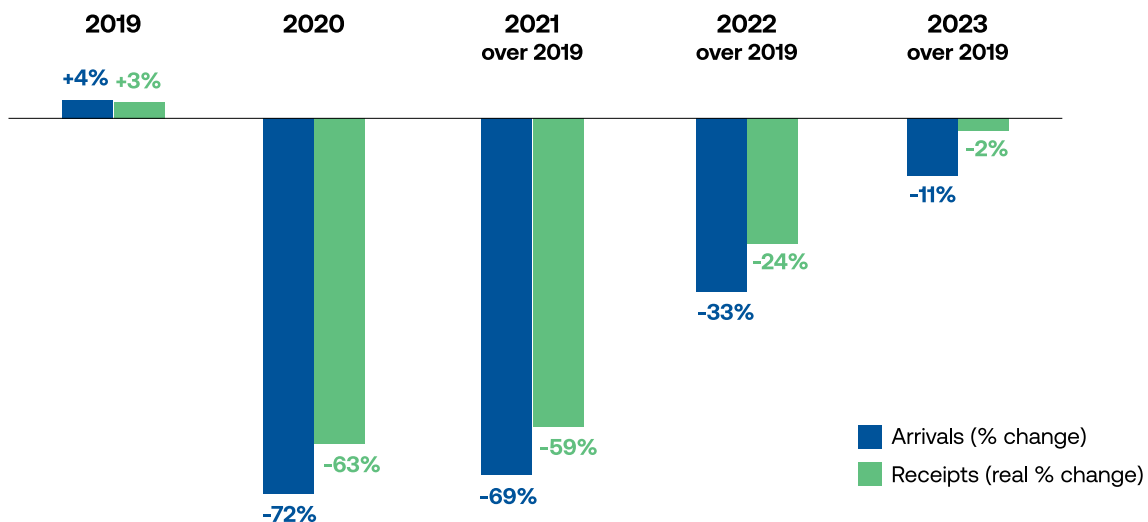
- Tourism generates employment and opportunities for women and young people.
- Women made up 54% of the tourism workforce before the pandemic¹.
- About 80% of tourism businesses are micro, small and medium-sized enterprises (MSMEs).

1 UNWTO (2019), *Global Report on Women in Tourism – Second Edition*, UNWTO, Madrid. DOI: <https://doi.org/10.18111/9789284420384>

2020–2022: An unprecedented crisis

- Tourism suffered an unprecedented disruption from the COVID-19 pandemic in 2020–2022, with a massive drop in international arrivals after a global lockdown and plunge in demand, amid travel restrictions to contain the spread of the coronavirus.
- International tourist arrivals (overnight visitors) plunged 72% to 400 million in 2020, from nearly 1.5 billion in 2019, making 2020 the worst year on record. The 4% drop during the global financial crisis in 2009 pales in comparison to the pandemic.
- International tourism receipts (visitor spending in destinations) fell 63% (real terms) to USD 560 billion in 2020, from USD 1.5 trillion in 2019. Total export revenues from tourism (including passenger transport) declined from USD 1.7 trillion to 656 billion, a loss of almost USD 1.1 trillion or 62% in 2020 alone.
- Tourism was one of the most affected sectors by the pandemic, with businesses, employment and livelihoods around the world severely impacted. The direct economic contribution of tourism was cut by half, from about USD 3.4 trillion in 2019 (4% of global GDP) to USD 1.6 trillion in 2020 (2% of GDP) measured in tourism direct gross domestic product (TDGDP).
- International travel started to rebound in the second half of 2021 thanks to the rollout of the coronavirus vaccine and the easing of entry restrictions in many destinations. However, arrivals remained 69% below 2019 levels that year.
- Increased cross-border coordination and safety protocols helped restore traveller confidence, but the pace of recovery remained slow and uneven across regions due to varying degrees of mobility restrictions, vaccination rates and travel demand.
- The recovery accelerated in 2022 despite the emergence of the Omicron variant of the virus in late 2021 and the Russian invasion of Ukraine in February 2022, as well as a challenging economic environment, especially high inflation.
- Over 970 million tourists travelled internationally in 2022, double those in 2021 but still 33% fewer than in 2019, meaning 67% of the pre-pandemic total. As a result, international receipts climbed to USD 1.1 billion in 2022, about 76% of the pre-pandemic value (-24% versus 2019).

Figure 2: International tourist arrivals and tourism receipts, (% change)



Source: UN Tourism

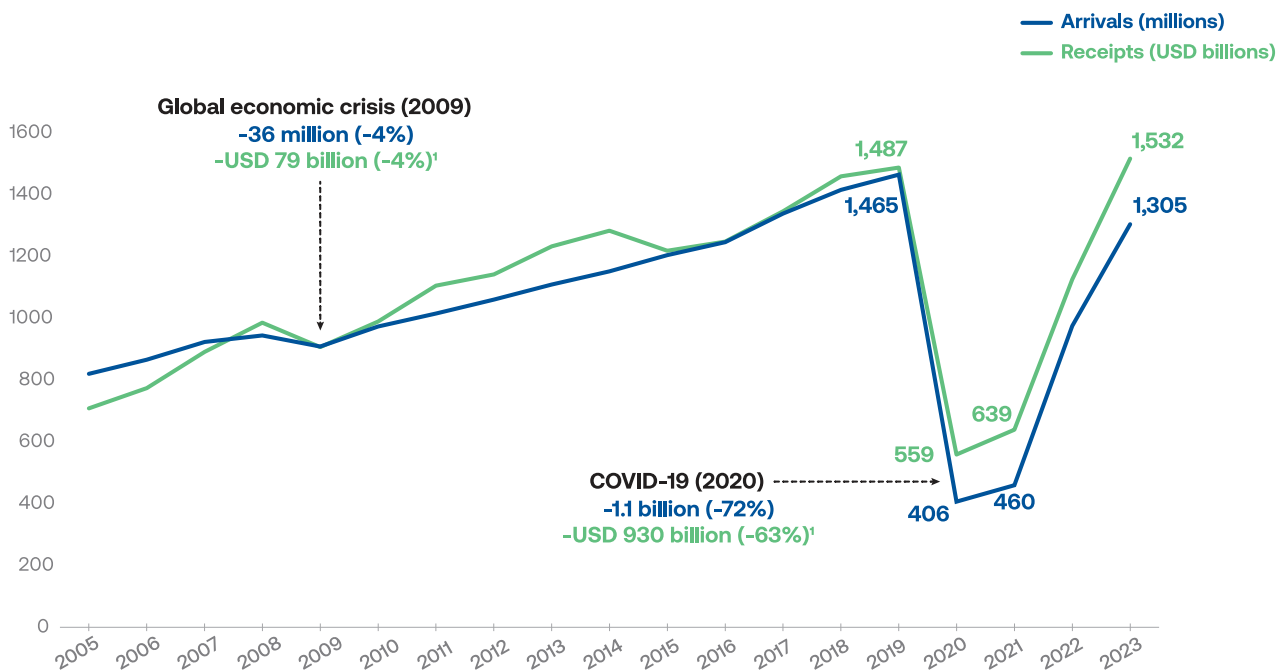
Data as of September 2024

https://www.e-unwto.org/doi/book/10.18111/9789284425808 - Jose Luis Vazquez Luna <jvazquez@anahuac.mx> - Thursday, January 16, 2025 2:09:20 PM - UNIVERSIDAD ANAHUAC - Escuela de Administración Turística IP Address:201.141.21.163

2023: International tourism bounces back

- International travel continued rebounding strongly to reach 1.3 billion arrivals in 2023, equivalent to 89% of pre-pandemic levels (-11% compared to 2019), up from 67% in 2022.
- The recovery was driven by large pent-up demand and the re-opening of several Asian markets and destinations which previously remained closed, as well as increased connectivity and visa facilitation. Demand was supported by resilient economic activity, despite rising interest rates and fairly high inflation in many parts of the world.
- The openness of destinations increased compared to before the pandemic, especially after pandemic-related restrictions were lifted in most countries. About 47% of the world population was subject to traditional visas in 2023 compared to 59% in 2018².
- Some 45 destinations around the world (out of 130 with data) recovered or surpassed their pre-pandemic arrival numbers in 2023. These strong performers account for almost 30% of the world's total arrivals (based on 2019 figures).
- Several destinations boasted double-digit growth compared to 2019, including Qatar (+90%), Puerto Rico (+59%), Saudi Arabia and Albania (both +56%), El Salvador (+40%), Colombia (+35%), Andorra (+31%), Cabo Verde (+27%), Curaçao (+26%) and the Dominican Republic (+25%).
- International tourism receipts hit USD 1.5 trillion in 2023, virtually recovering pre-pandemic levels (-2% versus 2019) and bringing total export revenues from tourism (including passenger transport fares) to USD 1.8 trillion, about 98% of pre-pandemic levels in real terms (local currencies and constant prices).

Figure 3: International tourist arrivals and tourism receipts, 2000-2023



Source: UN Tourism

¹ Change in local currencies and constant prices.

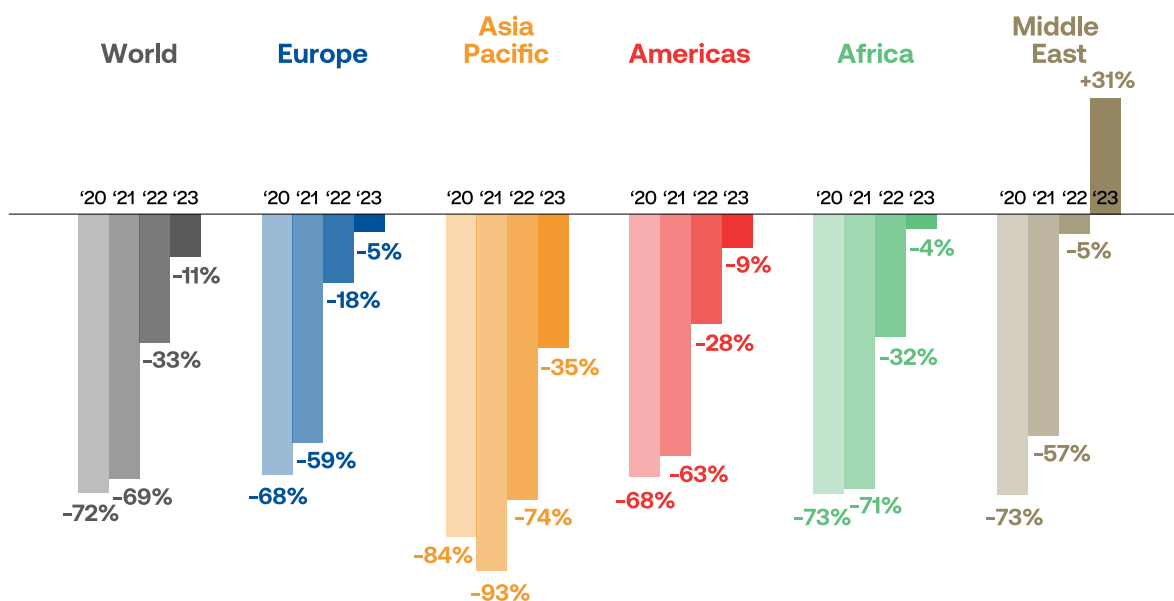
Data as of September 2024

Regional results in 2023

The Middle East saw the fastest recovery and exceeded pre-pandemic numbers

- The **Middle East** led results in 2023 in relative terms, with international arrivals climbing 31% above 2019 levels, to reach 93 million. It was the only world region to surpass pre-pandemic arrival numbers. Some destinations enjoyed extraordinary results, among which Qatar (+90%) Saudi Arabia (+56%) and Bahrain (+44%). The region benefitted from increased investment in tourism projects and infrastructure, as well as enhanced visa facilitation.
- Europe**, the world's most visited destination region, saw arrivals reach 95% of pre-pandemic levels in 2023 (-5% from 2019), supported by robust intra-regional demand and travel from the United States. The region enjoyed a strong summer season and welcomed 708 million international arrivals. Europe's share of global arrivals dipped to 54% in 2023 as Asia and the Pacific recovered part of its pre-pandemic numbers.
- Some of the strongest results in Europe were reported by Albania (+56% from 2019), Andorra (+31%) and Armenia 22%. Serbia reported 16% more arrivals than before the pandemic, the Republic of Moldova 12% and France 10% more. Other large destinations exceeding their pre-pandemic numbers in 2023 were Türkiye and Portugal (both +8%), Greece (+4%) and Spain (+2%).
- Africa** recovered 96% of pre-pandemic visitors in 2023 (66 million), with robust demand from European markets. According to available data, Ethiopia (+33%), Cabo Verde (27%), Tanzania (+25%), Morocco (+12%) and Mauritius (+8%) all exceeded their 2019 numbers. According to IATA, the region saw a buoyant recovery in international connectivity to Europe and the Middle East and on intra-regional routes.

Figure 4: International tourist arrivals (% change over 2019)

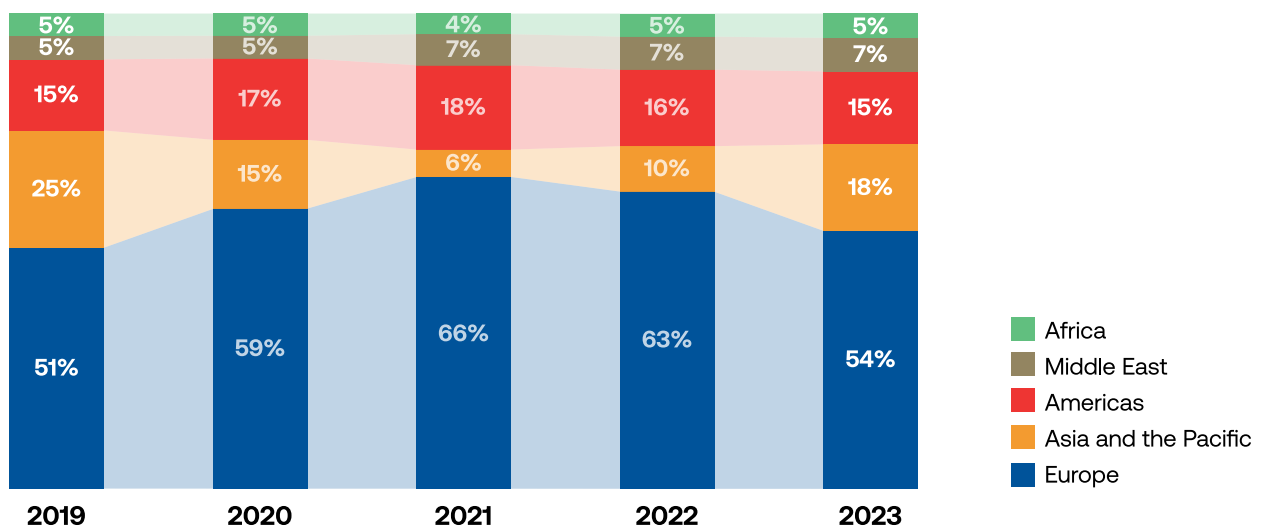


Source: UN Tourism

Data as of September 2024

- Arrivals in the **Americas** (200 million) reached 90% of 2019 numbers in 2023, backed by solid intra-regional demand. Strong travel from the United States benefitted Caribbean and Central American destinations in particular. Puerto Rico (+59%), El Salvador (+40%), Colombia (+35%) and the Dominican Republic (+25%) were among the strongest performers in 2023.
- **Asia and the Pacific** (237 million) saw arrivals reach 65% of pre-pandemic levels in 2023, following the reopening of several markets and destinations. China, the world’s largest source market before the pandemic, reopened its borders after a three-year closure. With the rebound, Asia’s share of global arrivals climbed to 18% in 2023, though still below the 25% share of 2019.
- Performance among Asian subregions was mixed, with South Asia recovering 85% of pre-pandemic levels and North-East Asia 55%. Among the best performers in Asia and the Pacific were Maldives (+10%), Fiji (+4%) and Mongolia (+3%), where arrivals grew above 2019 levels in 2023.

Figure 5: International tourist arrivals (share of world, %)



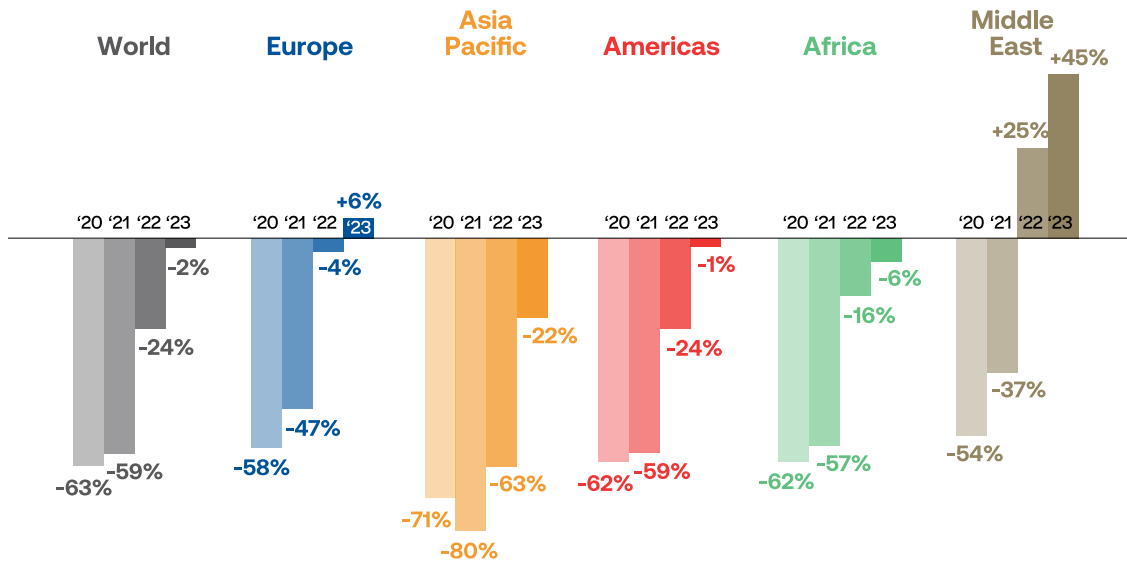
Source: UN Tourism

Data as of September 2024

Receipts in Europe and the Middle East surpassed 2019 levels

- By regions, **Europe** earned USD 663 billion in international tourism receipts in 2023, a 6% increase over 2019 in real terms (local currencies and constant prices) with most destinations posting double-digit growth.
- **Asia and the Pacific** recorded USD 347 billion, about 78% of the pre-crisis figure (-22% compared to 2019). The Americas also earned USD 347 billion in 2023, though almost the same value as before the pandemic (-1% over 2019).
- The **Middle East** saw the strongest growth in 2023, with receipts climbing 45% above 2019 levels to USD 137 billion, after growing 25% in 2022. African destinations earned a total USD 38 billion in 2023, reaching 94% of the region’s pre-pandemic earnings (-6% from 2019).

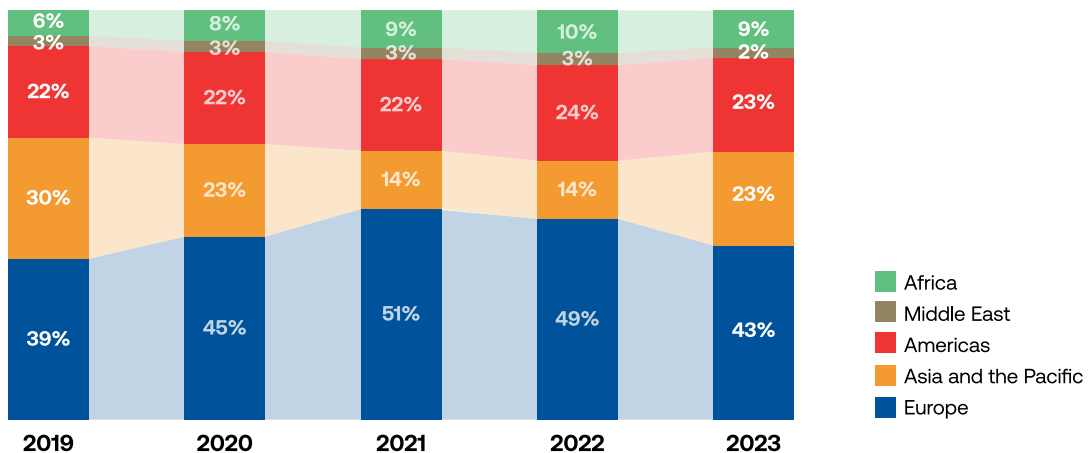
Figure 6: International tourism receipts (real % change over 2019)



Source: UN Tourism

Data as of September 2024

Figure 7: International tourism receipts (share of world, %)

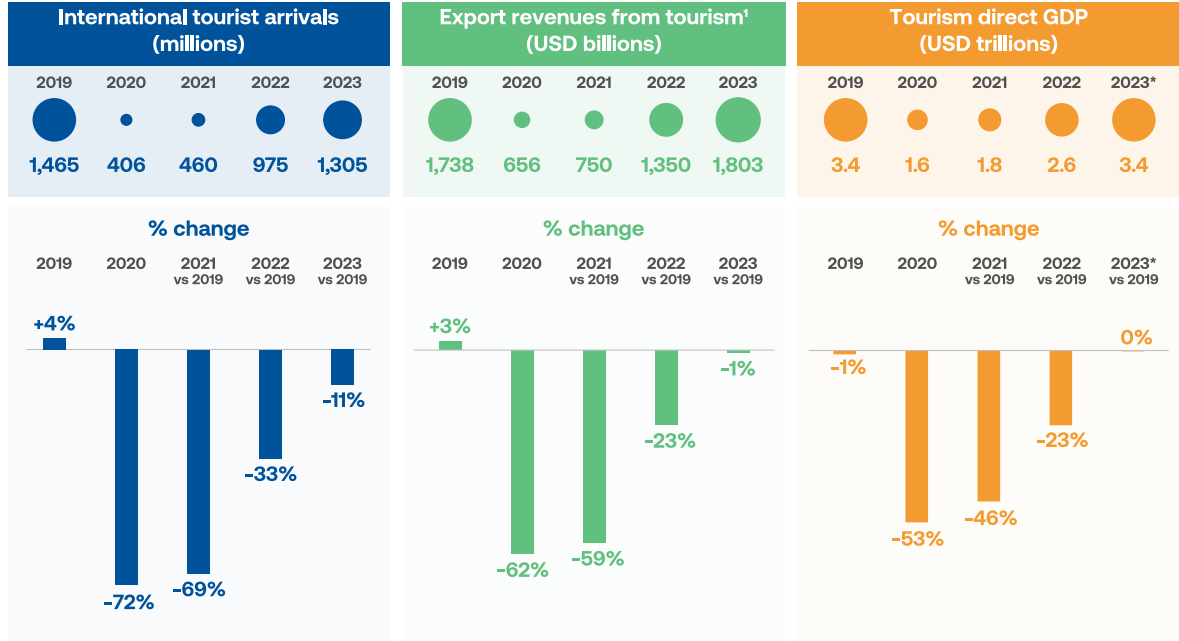


Source: UN Tourism

Data as of September 2024

World

Figure 8: Key tourism indicators, World



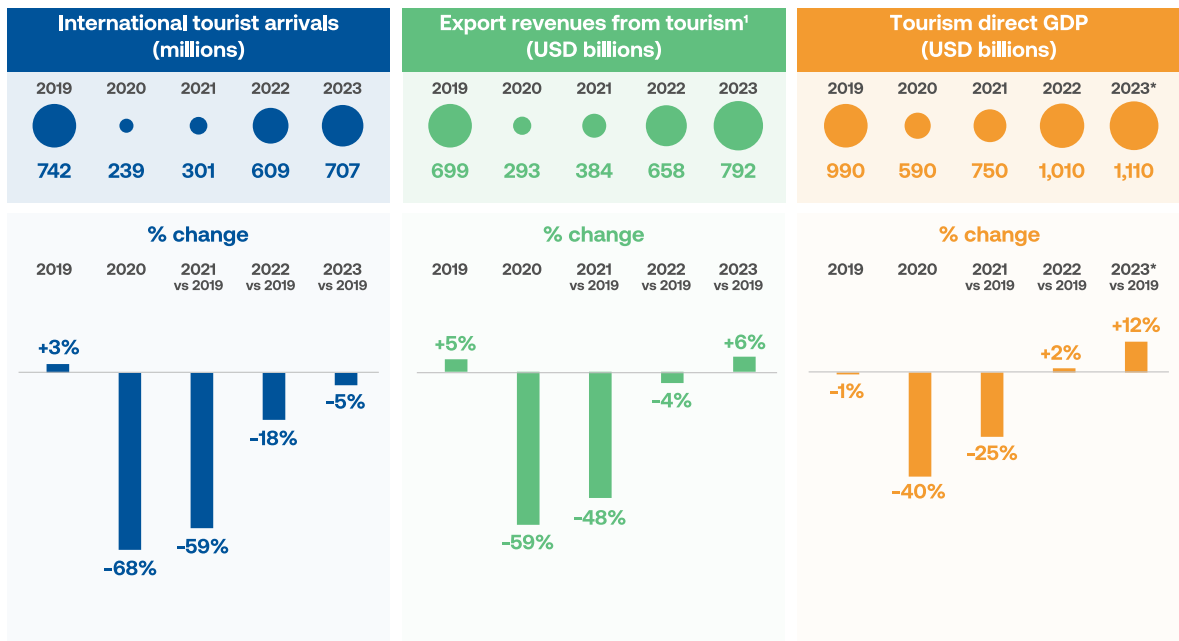
Source: UN Tourism

¹ Revenues include international tourism receipts and passenger transport fares.

*Preliminary estimate
Data as of September 2024

Europe

Figure 9: Key tourism indicators, Europe



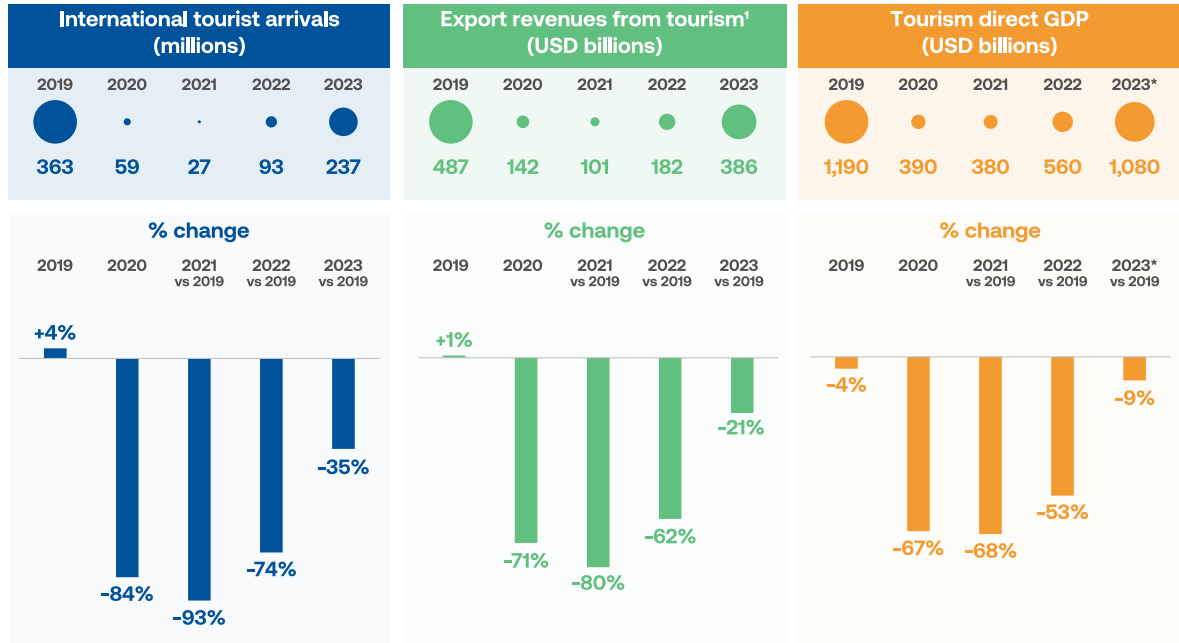
Source: UN Tourism

¹ Revenues include international tourism receipts and passenger transport fares.

*Preliminary estimate
Data as of September 2024

Asia and the Pacific

Figure 10: Key tourism indicators, Asia and the Pacific



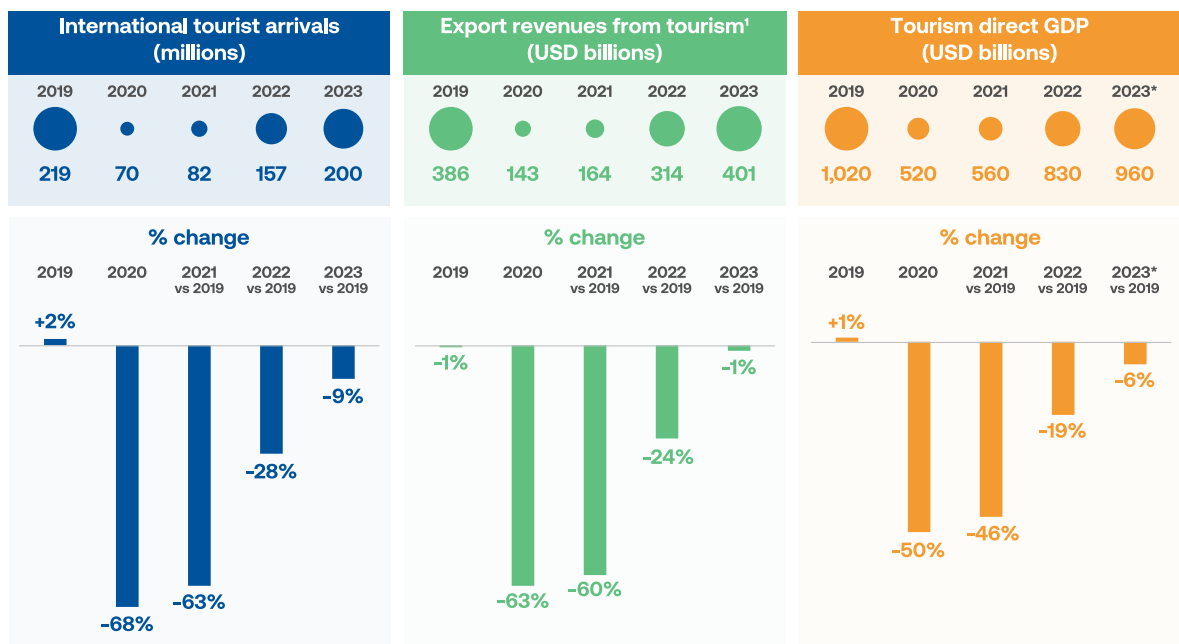
Source: UN Tourism

¹ Revenues include international tourism receipts and passenger transport fares.

*Preliminary estimate
Data as of September 2024

Americas

Figure 11: Key tourism indicators, Americas



Source: UN Tourism

¹ Revenues include international tourism receipts and passenger transport fares.

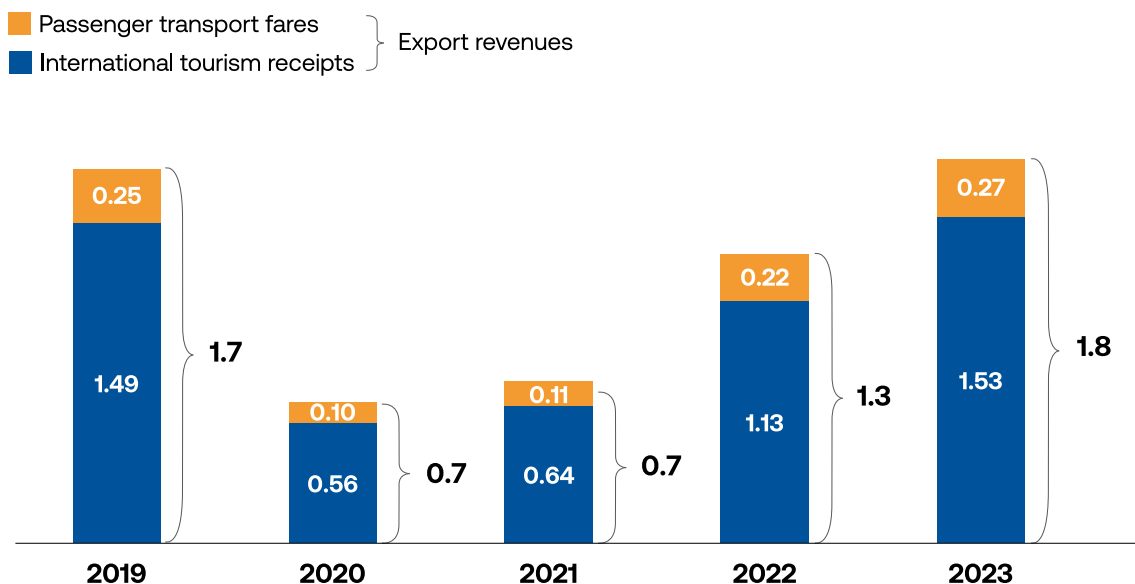
*Preliminary estimate
Data as of September 2024

Economic contribution of tourism

Export revenues from tourism reached 99% of pre-pandemic levels to hit USD 1.8 trillion

- International tourism contributes to local economies in the form of **export revenues** comprising international tourism receipts (visitor spending in destinations) and passenger transport receipts (international transport services rendered to visitors by local transport companies). For many destinations, revenues from tourism are a major source of foreign exchange and an important component of export diversification.
- In 2023 **international tourism receipts** (visitor spending in destinations) reached USD 1.5 trillion, meaning a complete recovery of pre-pandemic levels in nominal terms, but 98% in real terms, adjusting for inflation and currency fluctuations (-2% from 2019).
- Total export revenues** from tourism, which includes USD 1.5 trillion in receipts and USD 270 billion in passenger transport fares, reached USD 1.8 trillion in 2023, exceeding the pre-pandemic value of USD 1.7 trillion, and 99% of that value in real terms (-1% versus 2019).
- Revenues from international tourism accounted for 6% of all exports of goods and services in 2023, up from 4% in 2022, though below the 7% level of 2019. International tourism also accounted for 23% of trade in services in 2023, up from 19% in 2022, though below the pre-pandemic level of 28% in 2019.

Figure 14: Export revenues from international tourism (USD trillions)*



Source: UN Tourism

Data as of September 2024

*Revenues consist of international tourism receipts and passenger transport fares.

Tourism was the 5th largest export category in 2022

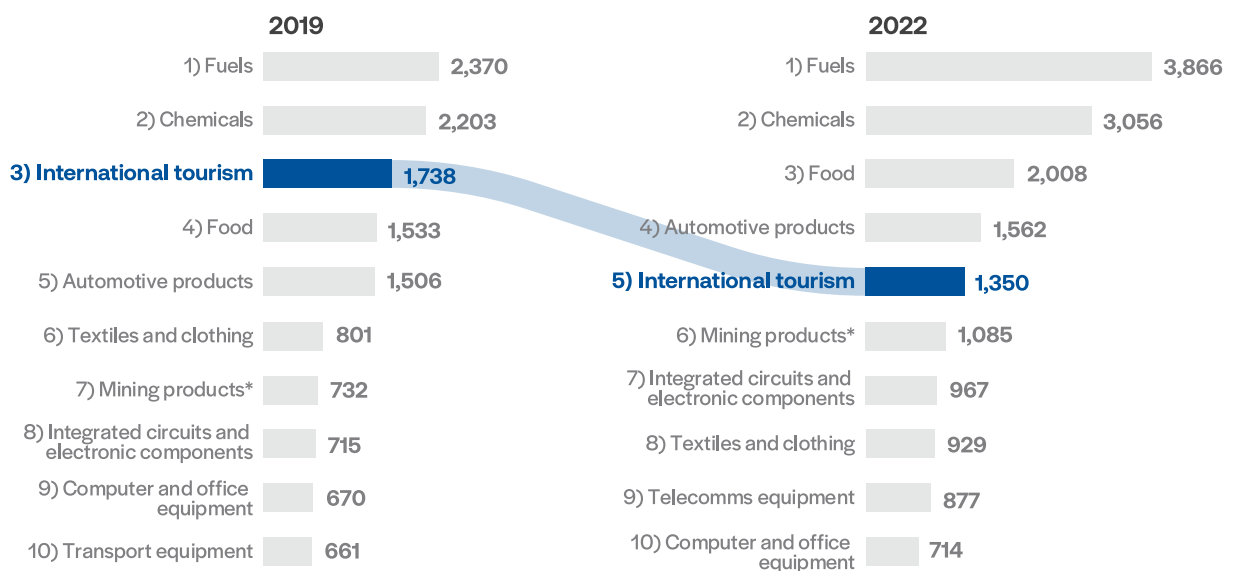
- Tourism was the world’s fifth largest export category in 2022, behind automotive products (4th), food (3rd), chemicals (2nd) and fuels (1st). In 2019, before the coronavirus pandemic, tourism was the third largest export. (Data for 2023 is still unavailable).

TDGDP recovered pre-pandemic levels in 2023

- The direct economic contribution of tourism is measured by **tourism direct gross domestic product** (TDGDP), a macroeconomic aggregate composed of the part of GDP generated by all industries in response to internal tourism consumption from both domestic and international travelers.

- TDGDP recovered pre-pandemic levels in 2023, reaching an estimated USD 3.4 trillion according to preliminary estimates³, equivalent to 3% of global GDP, though below the 4% contribution to GDP in 2019.
- Previously, TDGDP fell from USD 3.4 trillion in 2019 to USD 1.6 trillion in 2020 and USD 1.8 trillion in 2021 impacted by the pandemic. TDGDP then rebounded to USD 2.6 trillion in 2022, or 3% of GDP.
- The total loss in TDGDP for the years 2020, 2021 and 2022 was USD 3.8 trillion (based on provisional data), roughly the value of Germany’s economy in 2019.

Figure 15: World’s Top 10 export categories by earnings (USD trillions), 2019 and 2022



Source: World Tourism Organization (UN Tourism) and World Trade Organization (WTO)
*Other than fuels.

Data as of September 2024

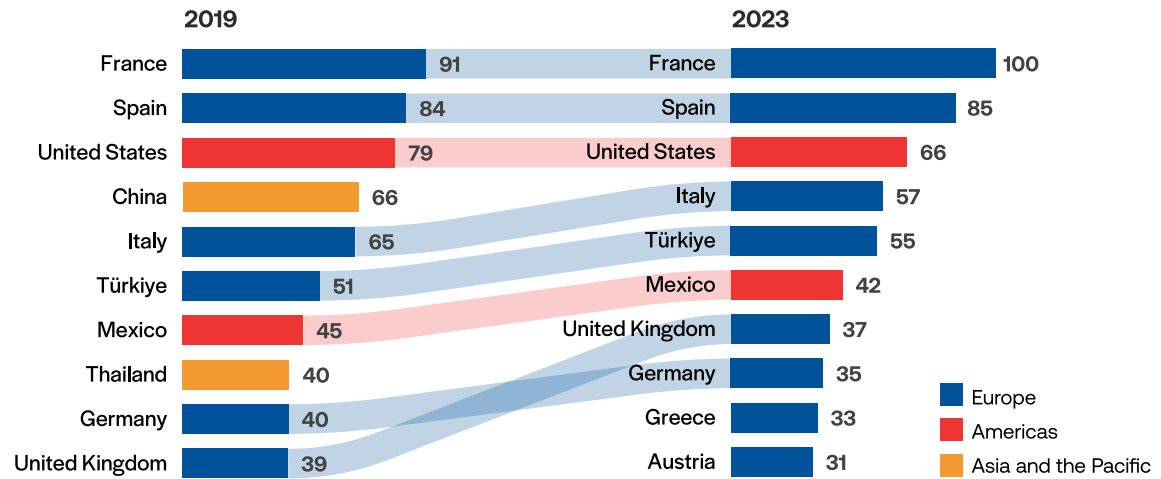
3 Estimates based on modelling work in: UNWTO (2021), *The Economic Contribution of Tourism and the Impact of COVID-19*, UNWTO, Madrid, DOI: <https://doi.org/10.18111/9789284423200>

World's top destinations in 2023

- France remained the world's most visited destination in 2023 with 100 million international tourist arrivals. Spain was second with 85 million, the United States third (66 million), Italy fourth (57 million) and Türkiye fifth with 55 million international tourists.
- Completing the top ten destinations in 2023 are Mexico, the United Kingdom, Germany, Greece and Austria. Compared to before the pandemic, Italy, Türkiye, Mexico, Germany and Austria all moved up one place, while the United Kingdom rose three, from 10th to 7th and Greece four, from 13th to 9th.
- In terms of international tourism receipts, the United States of America remains the top tourism earner with USD 189 billion in 2023. Spain ranks second with USD 92 billion, followed by the United Kingdom (USD 74 billion), France (USD 71 billion) and Italy (USD 56 billion).
- The other five top ten earners in 2023 were the United Arab Emirates, Türkiye, Australia, Japan and Canada. Between 2019 and 2023 the United Kingdom moved up two places in the receipts ranking (from 5th to 3rd), Italy moved up one (from 6th to 5th) and the United Arab Emirates moved up seven (from 13th to 6th). Türkiye (from 12th to 7th) and Canada (15th to 10th) both climbed five places.



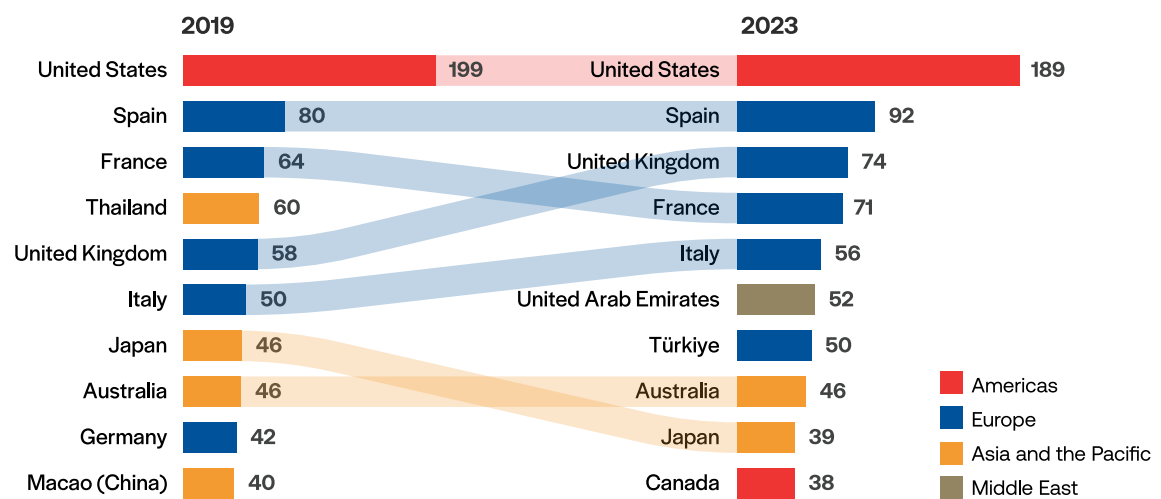
Figure 16: World’s top 10 destinations – International tourist arrivals (millions)



Source: UN Tourism

Data as of September 2024

Figure 17: World’s top 10 tourism earners – International tourism receipts (USD billions)



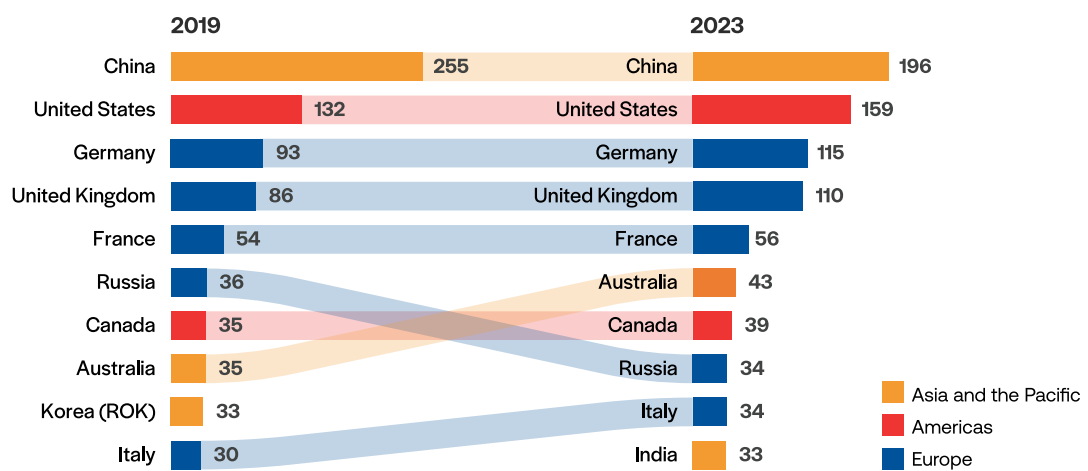
Source: UN Tourism

Data as of September 2024

Outbound tourism

- China regained its position as top spender on international travel in 2023 with USD 196 billion, ahead of the United States (USD 150 billion), Germany (USD 112 billion), the United Kingdom (USD 110 billion) and France USD 49 billion) which also experienced an increase in travel expenditure.
- Completing the top ten spenders in 2023 are Australia, Canada, the Russian Federation, Italy and India. Australia moved up two places in the expenditure ranking compared to 2019, while Italy moved up one. India, the world's most populous country, climbed from 14th to 10th place, pointing to the growing importance of this source market.

Figure 18: World's top 10 tourism spenders – International tourism expenditure (USD billions)

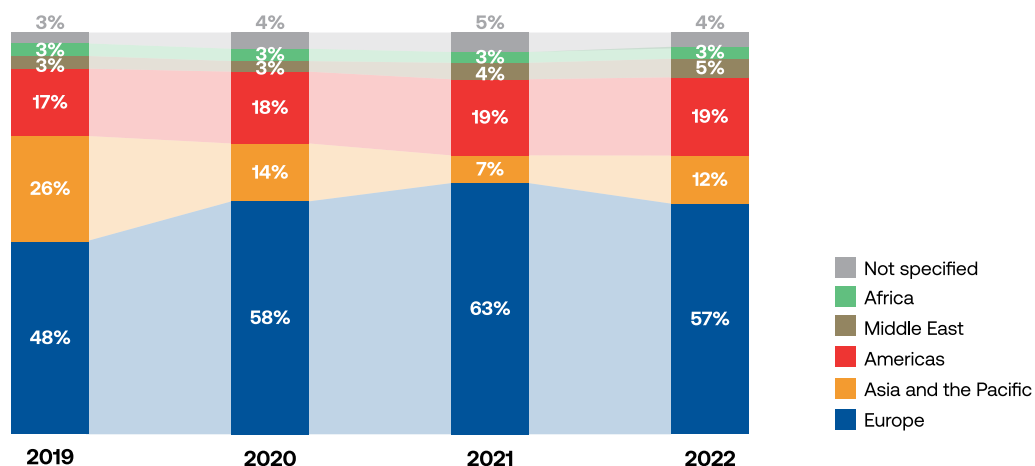


Source: UN Tourism

Data as of September 2024

- By source region, Europe generated 57% of the world's international arrivals in 2022, down from 63% in 2021, as other regions recovered. This is still above the 48% share before the pandemic, reflecting earlier opening of borders in Europe.
- International trips originating in Asia and the Pacific declined from 26% in 2019 to a low of 7% in 2021 due to stricter policies to contain the pandemic, but then increased to 12% in 2022.

Figure 19: Outbound tourism by region of origin, 2019–2022 (%)*



Source: UN Tourism

Data as of September 2024

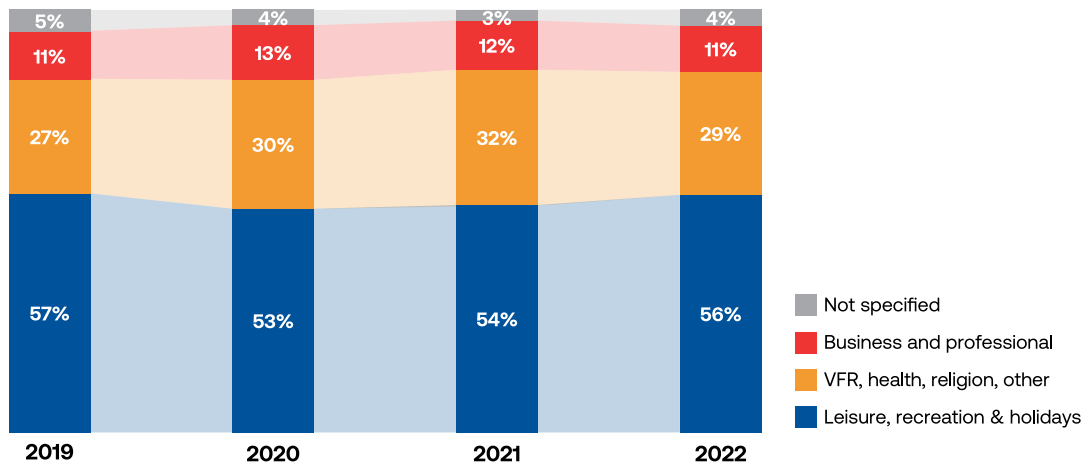
* International trips generated by each region.

Purpose of visit and mode of transport

Small rebound in leisure travel and air transport in 2022

- Leisure travel rebounded slightly in 2022 to reach 56% of all international arrivals, after a small decline to 53% and 54% during pandemic years 2020 and 2021. In contrast, visiting friends and relatives (VFR) and other purposes grew in 2020 and 2021 before dropping to 29% in 2022.
- As for mode of transport, air travel increased to 56% in 2022, from a low of 51% in 2020 and 55% in 2021. Road transport fell to 39% in 2022 from a high of 43% in 2020, suggesting a return to pre-crisis transportation preferences. (No data yet available for 2023).

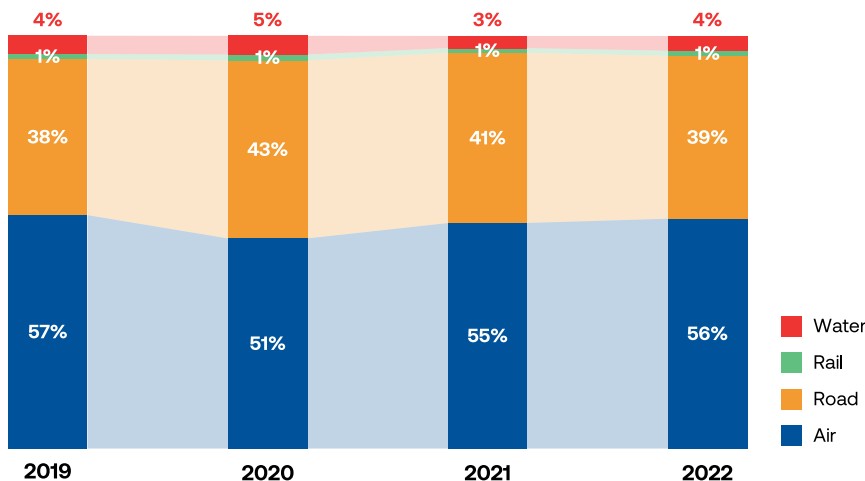
Figure 20: Inbound tourism by purpose of visit, 2019–2022 (%)



Source: UN Tourism

Data as of September 2024

Figure 21: Inbound tourism by mode of transport, 2019–2022 (%)



Source: UN Tourism

Data as of September 2024

Statistical Annex

International tourism by region

International tourist arrivals and tourism receipts

[Download data](#)

| | International Tourist Arrivals | | | | | | | International Tourism Receipts | | | | | | |
|---------------------------------|--------------------------------|--------------|--------------|--------------|--------------|--------------------|--------------|--------------------------------|--------------|--------------|--------------|--------------|--|--------------|
| | (millions) | | | | | % change over 2019 | | (USD billions) | | | | | % change (real) over 2019 ² | |
| | 2019 | 2020 | 2021 | 2022 | 2023 | 22/19 | 23/19 | 2019 | 2020 | 2021 | 2022 | 2023 | 22/19 | 23/19 |
| World | 1,465 | 406 | 460 | 975 | 1,305 | -33.5 | -10.9 | 1,487 | 559 | 639 | 1,133 | 1,532 | -24.3 | -1.6 |
| Advanced economies ¹ | 776 | 221 | 240 | 546 | 717 | -29.6 | -7.6 | 936 | 367 | 404 | 694 | 955 | -25.2 | -2.8 |
| Emerging economies ¹ | 689 | 186 | 219 | 429 | 588 | -37.8 | -14.7 | 552 | 192 | 235 | 439 | 577 | -22.8 | 0.5 |
| Europe | 742.4 | 239.4 | 300.9 | 609.5 | 707.4 | -17.9 | -4.7 | 583.7 | 249.6 | 329.0 | 552.4 | 662.7 | -3.6 | 6.0 |
| Northern Europe | 82.1 | 23.7 | 21.9 | 67.1 | 78.3 | -18.3 | -4.7 | 94.9 | 41.1 | 50.6 | 102.8 | 113.1 | 11.9 | 12.2 |
| Western Europe | 205.2 | 83.5 | 87.6 | 182.8 | 208.4 | -10.9 | 1.6 | 179.1 | 99.0 | 107.0 | 157.2 | 189.3 | -8.8 | -2.4 |
| Central/Eastern Europe | 150.9 | 43.8 | 52.6 | 94.1 | 112.3 | -37.7 | -25.6 | 69.0 | 28.7 | 34.7 | 56.7 | 69.0 | -21.3 | -7.1 |
| Southern/Medit. Eur. | 304.2 | 88.4 | 138.9 | 265.5 | 308.5 | -12.7 | 1.4 | 240.7 | 80.8 | 136.7 | 235.7 | 291.4 | -0.8 | 13.7 |
| - of which EU-27 | 539.2 | 182.8 | 222.3 | 454.3 | 525.6 | -15.7 | -2.5 | 422.9 | 182.5 | 233.7 | 383.4 | 466.0 | -6.2 | 2.2 |
| Asia and the Pacific | 362.7 | 58.9 | 26.6 | 93.3 | 237.2 | -74.3 | -34.6 | 441.2 | 126.5 | 90.4 | 159.9 | 347.0 | -63.0 | -21.9 |
| North-East Asia | 170.3 | 20.3 | 10.9 | 20.5 | 94.4 | -88.0 | -44.5 | 187.2 | 44.9 | 44.9 | 49.1 | 141.5 | -72.3 | -23.5 |
| South-East Asia | 138.6 | 25.5 | 3.3 | 42.3 | 99.0 | -69.5 | -28.6 | 146.9 | 31.3 | 10.9 | 49.5 | 102.9 | -66.2 | -31.7 |
| Oceania | 17.5 | 3.6 | 0.8 | 6.8 | 12.9 | -61.3 | -26.3 | 61.4 | 32.7 | 20.3 | 30.9 | 57.9 | -48.9 | -7.1 |
| South Asia | 36.3 | 9.6 | 11.7 | 23.8 | 30.9 | -34.4 | -14.8 | 45.7 | 17.6 | 14.3 | 30.4 | 44.7 | -34.1 | -3.2 |
| Americas | 219.3 | 69.7 | 81.8 | 157.2 | 200.1 | -28.3 | -8.8 | 331.1 | 125.6 | 143.1 | 269.6 | 346.7 | -24.0 | -0.5 |
| North America | 146.6 | 46.5 | 57.2 | 101.9 | 126.8 | -30.5 | -13.5 | 253.4 | 97.3 | 106.9 | 199.0 | 258.3 | -26.8 | -3.0 |
| Caribbean | 26.1 | 10.4 | 14.5 | 23.6 | 28.1 | -9.7 | 7.9 | 35.5 | 14.5 | 21.1 | 34.6 | 40.4 | -10.0 | 9.7 |
| Central America | 10.9 | 3.1 | 4.7 | 9.3 | 11.5 | -15.3 | 5.4 | 12.6 | 4.0 | 6.3 | 13.2 | 16.5 | 0.1 | 21.8 |
| South America | 35.6 | 9.8 | 5.3 | 22.4 | 33.6 | -37.1 | -5.6 | 29.5 | 9.8 | 8.9 | 22.8 | 31.5 | -26.6 | -1.1 |
| Africa | 69.0 | 18.8 | 19.9 | 46.9 | 66.4 | -32.0 | -3.8 | 39.5 | 15.0 | 18.0 | 33.4 | 38.2 | -15.8 | -5.8 |
| North Africa | 25.6 | 5.6 | 6.6 | 19.1 | 26.9 | -25.4 | 5.0 | 11.6 | 5.6 | 6.2 | 12.5 | 14.0 | 12.2 | 13.1 |
| Subsaharan Africa | 43.4 | 13.3 | 13.3 | 27.8 | 39.5 | -35.8 | -9.0 | 27.9 | 9.5 | 11.8 | 20.9 | 24.2 | -27.5 | -13.6 |
| Middle East | 71.6 | 19.4 | 30.5 | 68.0 | 93.5 | -5.1 | 30.5 | 92.0 | 41.9 | 58.5 | 117.8 | 137.4 | 25.0 | 45.5 |

Source: UN Tourism

Data as of September 2024

¹ Classification based on the International Monetary Fund (IMF).² In local currencies, constant prices.

Europe

International tourist arrivals and tourism receipts by country of destination

[Download data](#)

| | International Tourist Arrivals | | | | | | | | International Tourism Receipts | | | | | | | |
|-------------------------------|--------------------------------|----------------|----------------|----------------|----------------|--------------------|--------------|--------------|--------------------------------|----------------|----------------|----------------|----------------|--|-------------|-------|
| | (thousands) | | | | | % change over 2019 | | | (USD millions) | | | | | % change (real) ¹ over 2019 | | Basis |
| | Indic. | 2019 | 2020 | 2021 | 2022 | 2023 | 22/19 | 23/19 | 2019 | 2020 | 2021 | 2022 | 2023 | 22/19 | 23/19 | |
| Europe | | 742,399 | 239,435 | 300,949 | 609,454 | 707,441 | -17.9 | -4.7 | 583,747 | 249,554 | 329,021 | 552,370 | 662,702 | -3.6 | 6.0 | |
| Northern Europe | | 82,092 | 23,734 | 21,891 | 67,108 | 78,265 | -18.3 | -4.7 | 94,938 | 41,097 | 50,569 | 102,805 | 113,089 | 11.9 | 12.2 | |
| Denmark | TF | 14,725 | 6,229 | 7,555 | 14,190 | .. | -3.6 | .. | 8,520 | 3,962 | 4,470 | 8,510 | 9,758 | 6.0 | 18.3 | |
| Finland | TCE | 3,290 | 896 | 807 | 2,127 | 2,561 | -35.3 | -22.2 | 3,726 | 1,264 | 1,095 | 2,249 | 2,672 | -35.8 | -25.8 | |
| Iceland | TF | 213 | 490 | 689 | 1,715 | .. | 704.5 | .. | 2,695 | 641 | 1,302 | 2,485 | 3,120 | 1.8 | 30.3 | |
| Ireland | TF | 10,951 | .. | .. | .. | 6,300 | .. | -42.5 | 6,477 | 2,393 | 2,688 | 7,161 | 7,549 | 17.5 | 20.7 | |
| Norway | TCE | 5,879 | 1,397 | 1,435 | 4,979 | .. | -15.3 | .. | 5,894 | 1,819 | 1,955 | 5,767 | 6,196 | 6.9 | 26.2 | |
| Sweden | TCE | 7,616 | 1,957 | 2,990 | 6,629 | 7,531 | -13.0 | -1.1 | 9,196 | 4,350 | 6,099 | 9,044 | 9,871 | 5.2 | 20.4 | |
| United Kingdom | TF | 39,418 | 10,714 | 6,287 | 30,741 | 37,215 | -22.0 | -5.6 | 58,430 | 26,668 | 32,959 | 67,587 | 73,923 | 19.8 | 19.8 | |
| Western Europe | | 205,152 | 83,506 | 87,596 | 182,757 | 208,374 | -10.9 | 1.6 | 179,075 | 99,002 | 107,048 | 157,192 | 189,266 | -8.8 | -2.4 | |
| Austria | TCE | 31,884 | 15,091 | 12,728 | 26,215 | 30,910 | -17.8 | -3.1 | 22,942 | 13,848 | 10,449 | 19,914 | 24,962 | -7.7 | 12.6 | |
| Belgium | TCE | 9,343 | 2,584 | 3,243 | 8,220 | 9,280 | -12.0 | -0.7 | 8,840 | 6,247 | 6,303 | 6,934 | 7,615 | -16.6 | -10.8 | |
| France | TF | 90,914 | 41,684 | 48,395 | 93,196 | 100,000 | 2.5 | 10.0 | 63,507 | 32,564 | 40,802 | 59,675 | 71,211 | -0.1 | 16.1 | |
| Germany | TCE | 39,563 | 12,449 | 11,688 | 28,463 | 34,801 | -28.1 | -12.0 | 41,807 | 22,103 | 22,267 | 31,861 | 37,367 | -19.0 | -7.5 | |
| Liechtenstein | TCE | 98 | 58 | 71 | 101 | 114 | 2.8 | 15.8 | .. | .. | .. | .. | .. | .. | .. | |
| Luxembourg | TCE | 1,041 | 525 | 615 | 1,013 | 1,063 | -2.7 | 2.1 | 5,333 | 4,372 | 5,576 | 5,417 | 6,284 | 8.0 | 22.0 | |
| Monaco | THS | 363 | 159 | 218 | 327 | .. | -9.9 | .. | .. | .. | .. | .. | .. | .. | .. | |
| Netherlands | TCE | 20,128 | 7,265 | 6,248 | 16,063 | 20,303 | -20.2 | 0.9 | 18,575 | 9,658 | 9,428 | 16,038 | 20,686 | -8.2 | 15.3 | |
| Switzerland | TF | 11,818 | 3,690 | 4,390 | 9,160 | 11,561 | -22.5 | -2.2 | 18,071 | 10,209 | 12,224 | 17,353 | 21,141 | -7.7 | 5.8 | |
| Central/Eastern Europe | | 150,918 | 43,825 | 52,595 | 94,059 | 112,269 | -37.7 | -25.6 | 69,001 | 28,671 | 34,741 | 56,720 | 68,986 | -21.3 | -7.1 | |
| Armenia | TF | 1,894 | 375 | 870 | 1,666 | 2,317 | -12.1 | 22.3 | 1,528 | 287 | 784 | 2,439 | 3,009 | 59.6 | 96.9 | \$ |
| Azerbaijan | TF | 2,864 | 519 | 462 | 1,058 | 1,403 | -63.0 | -51.0 | 1,792 | 304 | 313 | 823 | 1,492 | -54.0 | -16.7 | \$ |
| Belarus | TCE | 2,206 | 577 | 787 | 1,492 | .. | -32.4 | .. | 901 | 359 | 427 | .. | .. | .. | .. | \$ |
| Bulgaria | TF | 7,775 | 1,290 | 2,300 | 5,557 | .. | -28.5 | .. | 4,294 | 1,693 | 2,483 | 3,413 | 4,032 | -15.4 | -2.8 | |
| Czech Republic | TF | 14,651 | 3,919 | 3,768 | 10,219 | .. | -30.2 | .. | 7,302 | 3,595 | 3,085 | 5,565 | 7,879 | -22.4 | 4.4 | |
| Estonia | TF | 3,336 | 1,023 | 808 | 2,166 | 2,422 | -35.1 | -27.4 | 1,736 | 595 | 633 | 1,269 | 1,489 | -22.3 | -11.2 | |
| Georgia | TF | 5,080 | 1,087 | 1,577 | 3,653 | 4,669 | -28.1 | -8.1 | 3,269 | 542 | 1,245 | 3,517 | 4,125 | 7.6 | 26.2 | \$ |
| Hungary | TF | 16,937 | 7,418 | 7,930 | 12,649 | 12,934 | -25.3 | -23.6 | 7,283 | 3,229 | 4,157 | 5,573 | 7,954 | -1.9 | 32.7 | |
| Kazakhstan | TF | .. | .. | .. | .. | .. | .. | .. | 2,456 | 613 | 608 | 1,491 | 2,256 | -39.3 | -8.1 | \$ |
| Kyrgyzstan | VF | 8,508 | 2,079 | 3,169 | 6,901 | .. | -18.9 | .. | 644 | 151 | 207 | 756 | 1,024 | 17.4 | 59.2 | \$ |
| Latvia | TF | 1,935 | 636 | 478 | .. | .. | .. | .. | 1,016 | 799 | 748 | 1,096 | 1,277 | 14.7 | 30.1 | |
| Lithuania | TF | 2,875 | 937 | 948 | 2,169 | 2,405 | -24.6 | -16.4 | 1,493 | 579 | 590 | 1,187 | 1,795 | -15.5 | 24.5 | |
| Poland | TF | 21,158 | 8,418 | 9,722 | 15,955 | 18,987 | -24.6 | -10.3 | 14,004 | 8,238 | 9,086 | 14,409 | 15,009 | 19.5 | 17.3 | |
| Rep. Moldova | TCE | 174 | 29 | 69 | 162 | 195 | -6.9 | 12.3 | 397 | 316 | 419 | 746 | 660 | 88.2 | 66.4 | \$ |
| Romania | TCE | 2,672 | 453 | 873 | 1,661 | 2,101 | -37.8 | -21.4 | 3,576 | 1,441 | 3,294 | 4,711 | 4,975 | 40.1 | 44.1 | € |
| Russian Federation | VF | 24,592 | 6,359 | .. | .. | .. | .. | .. | 10,961 | 3,909 | 3,991 | 5,604 | 6,732 | -48.9 | -38.6 | \$ |
| Slovakia | TF | 5,630 | .. | .. | .. | .. | .. | .. | 3,203 | 1,309 | 1,113 | 1,360 | 1,600 | -54.9 | -48.3 | |
| Tajikistan | VF | 1,257 | 351 | 296 | .. | .. | .. | .. | 14 | 6 | 11 | 18 | 20 | 31.9 | 45.6 | \$ |
| Turkmenistan | TF | .. | .. | .. | .. | .. | .. | .. | .. | .. | .. | .. | .. | .. | .. | |
| Ukraine | TF | 13,438 | 3,141 | 3,973 | 2,173 | .. | -83.8 | .. | 1,620 | 356 | 950 | 774 | 857 | -52.2 | -47.1 | \$ |
| Uzbekistan | VF | 6,749 | 1,553 | 1,881 | 5,233 | 6,626 | -22.5 | -1.8 | 1,513 | 350 | 596 | 1,437 | 2,167 | -5.0 | 43.2 | \$ |
| Southern/Medit. Europe | | 304,238 | 88,371 | 138,868 | 265,530 | 308,534 | -12.7 | 1.4 | 240,733 | 80,784 | 136,663 | 235,654 | 291,361 | -0.8 | 13.7 | |
| Albania | TF | 6,198 | 2,575 | 5,514 | 7,177 | 9,670 | 15.8 | 56.0 | 2,332 | 1,129 | 2,262 | 2,990 | 4,512 | 36.3 | 100.3 | € |
| Andorra | TF | 3,090 | 1,872 | 1,949 | 3,555 | 4,048 | 15.1 | 31.0 | 1,897 | 1,345 | 1,885 | 2,187 | .. | 15.3 | .. | \$ |
| Bosnia & Herzg. | TCE | 1,198 | 197 | 502 | 908 | 1,199 | -24.3 | 0.0 | 1,173 | 431 | 967 | 1,414 | 1,619 | 28.3 | 42.9 | |
| Croatia | TCE | 17,353 | 5,545 | 10,641 | 15,324 | 16,855 | -11.7 | -2.9 | 11,753 | 5,493 | 10,773 | 13,445 | 15,785 | 21.6 | 39.0 | € |
| Cyprus | TF | 3,977 | 632 | 1,937 | 3,201 | 3,846 | -19.5 | -3.3 | 3,251 | 734 | 2,090 | 2,835 | 3,234 | -7.3 | 3.0 | |
| North Macedonia | TCE | 758 | 118 | 294 | 537 | 734 | -29.1 | -3.1 | 396 | 252 | 385 | 481 | 599 | 29.3 | 56.7 | € |
| Greece | TF | 31,348 | 7,374 | 14,705 | 27,836 | 32,735 | -11.2 | 4.4 | 20,276 | 5,015 | 12,351 | 18,141 | 22,268 | -4.9 | 13.7 | |
| Israel | TF | 4,552 | 832 | 397 | 2,675 | 3,010 | -41.2 | -33.9 | 7,540 | 2,469 | 2,146 | 5,518 | 5,982 | -26.8 | -20.7 | \$ |
| Italy | TF | 64,513 | 25,190 | 26,888 | 49,811 | 57,250 | -22.8 | -11.3 | 49,521 | 19,895 | 24,968 | 43,699 | 55,890 | -6.2 | 16.8 | |
| Malta | TF | 2,753 | 659 | 968 | 2,287 | 2,976 | -16.9 | 8.1 | 1,901 | 392 | 780 | 1,618 | 2,143 | -9.5 | 16.7 | |
| Montenegro | TF | 2,510 | 351 | 1,554 | 2,036 | 2,447 | -18.9 | -2.5 | 1,230 | 165 | 896 | 1,111 | 1,630 | -4.0 | 37.2 | |
| Portugal | TCE/TF | 24,628 | 6,480 | 9,617 | 22,254 | 26,535 | -9.6 | 7.7 | 20,477 | 8,814 | 11,903 | 22,261 | 27,184 | 15.6 | 37.4 | |
| San Marino | THS | 111 | 58 | 94 | 110 | 109 | -1.5 | -2.3 | 227 | 155 | 225 | .. | .. | .. | .. | \$ |
| Serbia | TCE | 1,847 | 446 | 871 | 1,773 | 2,134 | -4.0 | 15.6 | 1,604 | 1,245 | 1,882 | 2,576 | 2,770 | 70.8 | 78.8 | € |
| Slovenia | TCE | 4,702 | 1,216 | 1,832 | 3,936 | 4,658 | -16.3 | -0.9 | 3,180 | 1,413 | 1,983 | 3,090 | 3,537 | 3.3 | 15.2 | |
| Spain | TF | 83,509 | 18,933 | 31,181 | 71,659 | 85,169 | -14.2 | 2.0 | 79,670 | 18,508 | 34,532 | 72,889 | 92,002 | -2.7 | 19.6 | |
| Türkiye | TF | 51,192 | 15,894 | 29,925 | 50,453 | 55,159 | -1.4 | 7.7 | 34,305 | 13,330 | 26,634 | 41,176 | 49,500 | 20.0 | 44.3 | \$ |

Source: UN Tourism

Data as of September 2024

¹ Percent change calculated in local currencies unless Basis column shows "\$" (in USD) or "€" (in EUR). For regions and subregions change is based on local currencies and constant prices.

See Key to abbreviations on page 27.

Asia and the Pacific

International tourist arrivals and tourism receipts by country of destination

[Download data](#)

| | International Tourist Arrivals | | | | | | | | International Tourism Receipts | | | | | | | |
|-----------------------------|--------------------------------|----------------|---------------|---------------|---------------|--------------------|--------------|--------------|--------------------------------|----------------|---------------|----------------|----------------|--|--------------|-------|
| | (thousands) | | | | | % change over 2019 | | | (USD millions) | | | | | % change (real) ¹ over 2019 | | Basis |
| | Indic. | 2019 | 2020 | 2021 | 2022 | 2023 | 22/19 | 23/19 | 2019 | 2020 | 2021 | 2022 | 2023 | 22/19 | 23/19 | |
| Asia and the Pacific | | 362,670 | 58,947 | 26,635 | 93,334 | 237,214 | -74.3 | -34.6 | 441,178 | 126,537 | 90,431 | 159,941 | 346,975 | -63.0 | -21.9 | |
| North-East Asia | | 170,311 | 20,260 | 10,855 | 20,502 | 94,443 | -88.0 | -44.5 | 187,197 | 44,878 | 44,914 | 49,146 | 141,528 | -72.3 | -23.5 | |
| China | TF | 65,700 | 7,967 | 5,662 | .. | .. | .. | .. | 35,832 | 9,951 | 11,330 | 13,474 | 24,798 | -63.3 | -29.0 | |
| Hong Kong (China) | TF | 23,752 | 1,359 | 89 | 568 | 17,159 | -97.6 | -27.8 | 28,913 | 2,859 | 1,850 | 3,134 | 20,868 | -89.2 | -27.9 | |
| Japan | VF | 31,882 | 4,116 | 246 | 3,832 | 25,066 | -88.0 | -21.4 | 46,054 | 10,700 | 4,861 | 9,238 | 38,587 | -75.8 | 8.0 | |
| Korea (DPRK) | | .. | .. | .. | .. | .. | .. | .. | .. | .. | .. | .. | .. | .. | .. | |
| Korea (ROK) | VF | 17,503 | 2,519 | 967 | 3,198 | 11,032 | -81.7 | -37.0 | 20,867 | 10,276 | 10,804 | 12,462 | 15,314 | -40.3 | -26.6 | \$ |
| Macao (China) | TF | 18,633 | 2,822 | 3,697 | 2,484 | 14,227 | -86.7 | -23.6 | 40,060 | 9,153 | 15,202 | 8,706 | 32,554 | -78.3 | -18.8 | |
| Mongolia | TF | 577 | 59 | 33 | 286 | 594 | -50.4 | 2.9 | 513 | 29 | 21 | 251 | 531 | -51.1 | 3.4 | \$ |
| Taiwan (pr. of China) | VF | 11,864 | 1,378 | 140 | 896 | 6,487 | -92.4 | -45.3 | 14,411 | 1,800 | 744 | 1,782 | 8,658 | -87.6 | -39.9 | \$ |
| South-East Asia | | 138,633 | 25,480 | 3,341 | 42,296 | 99,009 | -69.5 | -28.6 | 146,942 | 31,325 | 10,906 | 49,458 | 102,936 | -66.2 | -31.7 | |
| Brunei | TF | 333 | 62 | 4 | 36 | 134 | -89.3 | -59.9 | 217 | 38 | 2 | 14 | 71 | -93.7 | -67.2 | \$ |
| Cambodia | TF | 6,611 | 1,306 | 196 | 2,277 | 5,453 | -65.6 | -17.5 | 4,769 | 1,015 | 184 | 1,418 | 3,083 | -70.0 | -34.6 | |
| Indonesia | TF | 15,455 | 3,915 | 1,546 | .. | .. | .. | .. | 16,911 | 3,382 | 521 | 6,781 | 14,001 | -59.9 | -17.2 | \$ |
| Laos | TF | 4,384 | 812 | .. | .. | .. | .. | .. | 935 | 213 | 1 | 265 | .. | -71.7 | .. | \$ |
| Malaysia | TF | 26,101 | 4,333 | 135 | 10,071 | 20,142 | -61.4 | -22.8 | 19,829 | 2,974 | 78 | 6,520 | 14,918 | -65.1 | -17.2 | |
| Myanmar | TF | 4,364 | 903 | 131 | 233 | 1,285 | -94.6 | -70.6 | 2,483 | .. | .. | .. | .. | .. | .. | \$ |
| Philippines | TF | 8,261 | 1,483 | 164 | 2,654 | 5,003 | -67.9 | -39.4 | 9,781 | 1,791 | 600 | 4,174 | 9,118 | -57.3 | -6.8 | \$ |
| Singapore | TF | 15,119 | 2,086 | 325 | 5,344 | .. | -64.7 | .. | 20,344 | 5,443 | 4,016 | 11,396 | 21,067 | -43.4 | 1.9 | |
| Thailand | TF | 39,916 | 6,725 | 511 | 11,065 | 28,150 | -72.3 | -29.5 | 59,810 | 13,403 | 5,134 | 14,874 | 29,708 | -71.9 | -44.3 | |
| Timor-Leste | TF | 81 | 18 | 6 | .. | .. | .. | .. | 70 | 26 | 12 | 43 | 51 | -39.4 | -27.7 | \$ |
| Vietnam | VF | 18,009 | 3,837 | 157 | 3,661 | 12,602 | -79.7 | -30.0 | 11,792 | 2,500 | 149 | 3,841 | 9,200 | -67.4 | -22.0 | \$ |
| Oceania | | 17,464 | 3,598 | 758 | 6,763 | 12,866 | -61.3 | -26.3 | 61,386 | 32,720 | 20,342 | 30,929 | 57,858 | -48.9 | -7.1 | |
| American Samoa | TF | 19 | 1 | .. | .. | .. | .. | .. | .. | .. | .. | .. | .. | .. | .. | |
| Australia | VF | 9,466 | 1,828 | 246 | 3,694 | 7,187 | -61.0 | -24.1 | 45,522 | 25,821 | 16,988 | 24,647 | 46,071 | -45.7 | 5.9 | |
| Cook Islands | TF | 172 | 25 | 26 | 114 | 144 | -33.9 | -16.4 | 228 | 37 | 43 | .. | .. | .. | .. | |
| Fiji | TF | 894 | 147 | 32 | 636 | 930 | -28.9 | 4.0 | 962 | 151 | 35 | 696 | 1,051 | -26.3 | 13.8 | |
| French Polynesia | TF | 237 | 77 | 83 | 218 | 262 | -7.8 | 10.6 | .. | .. | .. | .. | .. | .. | .. | |
| Guam | TF | 1,667 | 328 | 79 | 328 | 656 | -80.3 | -60.6 | .. | .. | .. | .. | .. | .. | .. | |
| Kiribati | TF | 8 | 1 | 0 | 2 | .. | -77.6 | .. | 3 | 0 | 0 | 2 | .. | -44.9 | .. | \$ |
| Marshall Islands | TF | 6 | 1 | 0 | .. | .. | .. | .. | 4 | 4 | .. | .. | .. | .. | .. | |
| Micronesia FSM | TF | 18 | .. | .. | .. | .. | .. | .. | .. | .. | .. | .. | .. | .. | .. | |
| N.Mariana Islands | VF | 487 | 89 | 13 | 97 | 216 | -80.2 | -55.7 | .. | .. | .. | .. | .. | .. | .. | |
| New Caledonia | TF | 131 | 31 | 12 | 80 | 126 | -39.1 | -4.0 | .. | .. | .. | .. | .. | .. | .. | |
| New Zealand | TF | 3,702 | 948 | 205 | 1,389 | .. | -62.5 | .. | 10,533 | 5,751 | 2,866 | 3,917 | 7,947 | -61.4 | -19.1 | |
| Niue | TF | 10 | 1 | 0 | .. | .. | .. | .. | .. | .. | .. | .. | .. | .. | .. | \$ |
| Palau | TF | 94 | 18 | 5 | 12 | 41 | -86.8 | -56.0 | 83 | 41 | 4 | 15 | .. | -82.0 | .. | \$ |
| Papua New Guinea | TF | 160 | 39 | 17 | 67 | .. | -58.3 | .. | 4 | 2 | 1 | 1 | .. | -71.0 | .. | |
| Samoa | TF | 172 | 23 | 3 | 49 | 169 | -71.3 | -2.0 | 207 | 24 | 0 | 59 | 220 | -71.3 | 10.1 | |
| Solomon Islands | TF | 29 | 4 | 1 | 7 | 26 | -74.7 | -10.2 | 71 | 6 | 0 | 5 | 23 | -92.6 | -67.3 | |
| Tonga | TF | 67 | 9 | 0 | 18 | .. | -72.7 | .. | 57 | 47 | 9 | 10 | .. | -82.6 | .. | \$ |
| Tuvalu | TF | 4 | 1 | 0 | 0 | .. | -93.4 | .. | 8 | 1 | 0 | 1 | .. | -89.2 | .. | |
| Vanuatu | TF | 121 | 22 | .. | 30 | 77 | -74.8 | -36.2 | 229 | 55 | 2 | 39 | .. | -82.9 | .. | \$ |
| South Asia | | 36,262 | 9,609 | 11,681 | 23,773 | 30,895 | -34.4 | -14.8 | 45,653 | 17,614 | 14,269 | 30,409 | 44,654 | -34.1 | -3.2 | |
| Afghanistan | | .. | .. | .. | .. | .. | .. | .. | 72 | 65 | .. | .. | .. | .. | .. | \$ |
| Bangladesh | TF | 323 | 182 | 135 | .. | .. | .. | .. | 388 | 217 | 273 | 421 | 453 | 17.8 | 46.8 | |
| Bhutan | TF | 316 | 30 | .. | 21 | .. | -93.4 | .. | 120 | 84 | 4 | 0 | .. | -99.8 | .. | \$ |
| India | TF | 17,914 | 6,337 | 7,010 | 14,330 | .. | -20.0 | .. | 30,720 | 13,036 | 8,650 | 21,360 | 32,209 | -22.4 | 23.0 | |
| Iran | VF | 9,107 | 1,550 | 989 | 4,108 | 5,868 | -54.9 | -35.6 | .. | .. | .. | .. | .. | .. | .. | \$ |
| Maldives | TF | 1,703 | 555 | 1,322 | 1,675 | 1,879 | -1.6 | 10.3 | 3,157 | 1,398 | 3,508 | 4,498 | 4,230 | 42.5 | 34.0 | \$ |
| Nepal | TF | 1,197 | 230 | 151 | 614 | 1,015 | -48.7 | -15.2 | 705 | 194 | 143 | 375 | 564 | -41.0 | -6.3 | |
| Pakistan | TF | 3,583 | 163 | 1,859 | 1,918 | 2,215 | -46.5 | -38.2 | 494 | 439 | 559 | 738 | 859 | 49.4 | 73.8 | \$ |
| Sri Lanka | TF | 1,914 | 508 | 194 | 720 | 1,487 | -62.4 | -22.3 | 3,607 | 682 | 507 | 1,136 | 2,068 | -68.5 | -42.7 | \$ |

Source: UN Tourism

Data as of September 2024

¹ Percent change calculated in local currencies unless Basis column shows "\$" (in USD). For regions and subregions change is based on local currencies and constant prices.

See Key to abbreviations on page 27.

Americas

International tourist arrivals and tourism receipts by country of destination

[Download data](#)

| | International Tourist Arrivals | | | | | | | | International Tourism Receipts | | | | | | | | |
|------------------------|--------------------------------|----------------|---------------|---------------|----------------|--------------------|--------------|--------------|--------------------------------|----------------|----------------|----------------|----------------|--|-------------|--|-------|
| | (thousands) | | | | | % change over 2019 | | | (USD millions) | | | | | % change (real) ¹ over 2019 | | | Basis |
| | Indic. | 2019 | 2020 | 2021 | 2022 | 2023 | 22/19 | 23/19 | 2019 | 2020 | 2021 | 2022 | 2023 | 22/19 | 23/19 | | |
| Americas | | 219,255 | 69,729 | 81,752 | 157,152 | 200,059 | -28.3 | -8.8 | 331,051 | 125,643 | 143,084 | 269,620 | 346,674 | -24.0 | -0.5 | | |
| North America | | 146,611 | 46,455 | 57,203 | 101,920 | 126,776 | -30.5 | -13.5 | 253,362 | 97,338 | 106,853 | 198,984 | 258,291 | -26.8 | -3.0 | | |
| Canada | TF | 22,145 | 2,960 | 3,062 | 12,824 | 18,344 | -42.1 | -17.2 | 29,807 | 13,863 | 15,341 | 28,058 | 38,463 | -7.7 | 31.3 | | |
| Mexico | TF | 45,024 | 24,284 | 31,860 | 38,326 | 41,949 | -14.9 | -6.8 | 24,573 | 10,996 | 19,765 | 28,017 | 30,694 | 14.0 | 24.9 | | |
| United States | TF | 79,442 | 19,212 | 22,280 | 50,771 | 66,482 | -36.1 | -16.3 | 198,982 | 72,479 | 71,746 | 142,909 | 189,134 | -28.2 | -4.9 | | |
| Caribbean | | 26,094 | 10,408 | 14,515 | 23,552 | 28,148 | -9.7 | 7.9 | 35,518 | 14,510 | 21,102 | 34,561 | 40,385 | -10.0 | 9.7 | | |
| Anguilla | TF | 95 | 25 | 28 | 74 | 96 | -22.4 | 0.6 | 163 | 46 | 55 | 140 | 171 | -14.1 | 4.5 | | |
| Antigua & Barbuda | TF | 301 | 125 | 170 | 265 | 282 | -11.9 | -6.3 | 904 | 412 | 539 | 773 | 756 | -14.5 | -16.3 | | |
| Aruba | TF | 1,119 | 368 | 807 | 1,101 | 1,260 | -1.6 | 12.6 | 1,959 | 946 | 1,650 | 2,311 | 2,625 | 18.0 | 34.0 | | |
| Bahamas | TF | 1,807 | 441 | 892 | 1,453 | 1,806 | -19.6 | 0.0 | 4,126 | 967 | 2,322 | 4,222 | 4,755 | 2.3 | 15.3 | | |
| Barbados | TF | 523 | 195 | 145 | 540 | 637 | 3.2 | 21.7 | 1,299 | 602 | 623 | 935 | 1,155 | -28.0 | -11.1 | | |
| Bermuda | TF | 269 | 42 | 72 | 146 | 185 | -45.9 | -31.2 | 600 | 94 | 143 | 342 | 521 | -43.0 | -13.2 | | |
| Brit. Virgin Islands | TF | 302 | 83 | 56 | 173 | 261 | -42.7 | -13.6 | .. | .. | .. | .. | .. | .. | .. | | |
| Cayman Islands | TF | 503 | 122 | 17 | 284 | 429 | -43.5 | -14.6 | 919 | 251 | 39 | .. | .. | .. | .. | | |
| Cuba | TF | 4,263 | 1,085 | 356 | 1,613 | .. | -62.2 | .. | 2,596 | 1,137 | 404 | 1,037 | .. | -60.1 | .. | | |
| Curaçao | TF | 464 | 175 | 265 | 490 | 582 | 5.6 | 25.6 | 703 | 281 | 550 | 988 | 1,018 | 40.5 | 44.8 | | |
| Dominica | TF | 90 | 22 | 15 | 61 | 68 | -31.9 | -24.7 | 135 | 30 | 23 | 91 | 79 | -32.6 | -41.3 | | |
| Dominican Rep. | TF | 6,446 | 2,405 | 4,994 | 7,163 | 8,059 | 11.1 | 25.0 | 7,472 | 2,675 | 5,697 | 8,395 | 9,751 | 12.4 | 30.5 | | |
| Grenada | TF | 188 | 54 | 47 | 149 | .. | -20.7 | .. | 560 | 186 | 232 | 569 | 327 | 1.6 | -41.6 | | |
| Guadeloupe | TCE | .. | .. | .. | .. | .. | .. | .. | .. | .. | .. | .. | .. | .. | .. | | |
| Haiti | TF | 286 | 203 | 159 | .. | .. | .. | .. | 450 | 102 | 110 | 73 | .. | -83.7 | .. | | |
| Jamaica | TF | 2,681 | 880 | 1,464 | 2,478 | 2,876 | -7.6 | 7.3 | 3,639 | 1,256 | 2,095 | 3,621 | 4,316 | -0.5 | 18.6 | | |
| Martinique | TF | 556 | 312 | 291 | 556 | .. | 0.0 | .. | 549 | 280 | 283 | 535 | .. | 3.6 | .. | | |
| Montserrat | TF | 10 | 5 | 2 | 5 | 8 | -55.7 | -25.8 | 10 | 5 | 2 | 5 | 8 | -53.8 | -20.4 | | |
| Puerto Rico | TF | 3,180 | 2,617 | 2,755 | 4,232 | 5,046 | 33.1 | 58.7 | 3,612 | 2,921 | 2,787 | 4,567 | 5,368 | 26.5 | 48.6 | | |
| Saint Lucia | TF | 424 | 131 | 199 | 356 | 381 | -15.9 | -10.1 | 999 | 318 | 564 | 1,093 | 1,154 | 9.5 | 15.6 | | |
| St. Kitts & Nevis | TF | 120 | 30 | 20 | 80 | 104 | -33.6 | -13.1 | 189 | 46 | 29 | 116 | 159 | -38.3 | -15.9 | | |
| St. Maarten | TF | 320 | 106 | 249 | 373 | 395 | 16.6 | 23.6 | 682 | 234 | 492 | 956 | 1,029 | 40.3 | 50.9 | | |
| St. Vincent & Gren. | TF | 84 | 27 | 24 | 59 | 81 | -29.7 | -3.8 | 242 | 88 | 60 | 166 | 210 | -31.4 | -13.4 | | |
| Trinidad & Tobago | TF | 389 | 95 | 41 | 226 | 309 | -41.7 | -20.5 | 436 | 144 | 53 | 324 | 429 | -25.6 | -1.6 | | |
| Turks & Caicos | TF | 487 | 165 | 405 | 616 | 663 | 26.6 | 36.1 | .. | .. | .. | .. | .. | .. | .. | | |
| US Virgin Islands | TF | 462 | 406 | 694 | 366 | .. | -20.8 | .. | 1,031 | 686 | 1,004 | .. | .. | .. | .. | | |
| Central America | | 10,932 | 3,102 | 4,687 | 9,261 | 11,526 | -15.3 | 5.4 | 12,626 | 4,021 | 6,268 | 13,225 | 16,526 | 0.1 | 21.8 | | |
| Belize | TF | 503 | 144 | 219 | 373 | 465 | -25.9 | -7.6 | 527 | 247 | 374 | 601 | 717 | 14.0 | 36.1 | | |
| Costa Rica | TF | 3,139 | 1,012 | 1,347 | 2,350 | 2,751 | -25.2 | -12.4 | 3,988 | 1,328 | 1,717 | 3,913 | 4,768 | -1.9 | 19.5 | | |
| El Salvador | TF | 1,766 | 549 | 1,219 | 1,891 | 2,479 | 7.1 | 40.4 | 1,306 | 636 | 993 | 1,864 | 2,755 | 42.8 | 111.0 | | |
| Guatemala | TF | 1,752 | 396 | 602 | 1,494 | 2,021 | -14.7 | 15.3 | 1,221 | 327 | 388 | 992 | 1,373 | -18.7 | 12.5 | | |
| Honduras | TF | 724 | 204 | 459 | 844 | 850 | 16.6 | 17.4 | 549 | 155 | 303 | 540 | 722 | -1.7 | 31.4 | | |
| Nicaragua | TF | 1,295 | 384 | 222 | 818 | 1,087 | -36.9 | -16.1 | 515 | 199 | 184 | 596 | 739 | 15.6 | 43.5 | | |
| Panama | TF | 1,753 | 414 | 618 | 1,492 | 1,874 | -14.9 | 6.9 | 4,520 | 1,129 | 2,309 | 4,721 | 5,452 | 4.4 | 20.6 | | |
| South America | | 35,618 | 9,763 | 5,347 | 22,418 | 33,610 | -37.1 | -5.6 | 29,545 | 9,774 | 8,862 | 22,850 | 31,472 | -26.6 | -1.1 | | |
| Argentina | TF | 7,399 | 2,090 | 297 | 3,890 | 7,286 | -47.4 | -1.5 | 5,241 | 1,727 | 394 | 3,474 | 5,486 | -33.7 | 4.7 | | |
| Bolivia | TF | 1,239 | 323 | 180 | 724 | 1,009 | -41.6 | -18.6 | 837 | 189 | 189 | 530 | 688 | -36.7 | -17.8 | | |
| Brazil | TF | 6,353 | 2,146 | 746 | 3,630 | 5,908 | -42.9 | -7.0 | 5,995 | 3,044 | 2,947 | 4,952 | 6,907 | -17.4 | 15.2 | | |
| Chile | TF | 4,518 | 1,119 | 190 | 2,030 | 3,731 | -55.1 | -17.4 | 2,302 | 413 | 113 | 1,104 | 2,403 | -52.1 | 4.4 | | |
| Colombia | TF | 4,169 | 1,252 | 2,127 | 4,519 | 5,631 | 8.4 | 35.1 | 5,682 | 1,568 | 2,741 | 6,223 | 7,557 | 9.5 | 33.0 | | |
| Ecuador | VF | 2,108 | 507 | 669 | 1,265 | 1,427 | -40.0 | -32.3 | 2,188 | 701 | 1,055 | 1,793 | 1,987 | -18.0 | -9.2 | | |
| French Guiana | TF | .. | .. | .. | .. | .. | .. | .. | .. | .. | .. | .. | .. | .. | .. | | |
| Guyana | TF | 315 | 87 | 157 | 288 | 319 | -8.4 | 1.4 | 27 | 24 | 26 | 51 | .. | 87.3 | .. | | |
| Paraguay | TF | 1,216 | 253 | 95 | 579 | 864 | -52.3 | -28.9 | 953 | 201 | 84 | 454 | 633 | -52.4 | -33.6 | | |
| Peru | TF | 4,372 | 897 | 444 | 2,009 | 2,525 | -54.0 | -42.3 | 3,738 | 776 | 688 | 2,137 | 2,711 | -42.8 | -27.5 | | |
| Suriname | TF | .. | 66 | 71 | .. | .. | .. | .. | 53 | 15 | 13 | 26 | 29 | -49.8 | -44.2 | | |
| Uruguay | TF | 3,237 | 916 | 267 | 2,467 | 3,835 | -23.8 | 18.5 | 2,251 | 1,081 | 556 | 1,800 | 2,488 | -20.0 | 10.5 | | |
| Venezuela | TF | 260 | .. | 74 | 677 | .. | 160.8 | .. | .. | .. | 28 | 271 | .. | .. | .. | | |

Source: UN Tourism

Data as of September 2024

¹ Percent change calculated in local currencies unless Basis column shows "\$" (in USD). For regions and subregions change is based on local currencies and constant prices.

See Key to abbreviations on page 27.

Africa

International tourist arrivals and tourism receipts by country of destination

[Download data](#)

| | International Tourist Arrivals | | | | | | | | International Tourism Receipts | | | | | | | |
|--------------------------|--------------------------------|---------------|---------------|---------------|---------------|--------------------|--------------|-------------|--------------------------------|---------------|---------------|---------------|---------------|--|--------------|-------|
| | (thousands) | | | | | % change over 2019 | | | (USD millions) | | | | | % change (real) ¹ over 2019 | | |
| | Indic. | 2019 | 2020 | 2021 | 2022 | 2023 | 22/19 | 23/19 | 2019 | 2020 | 2021 | 2022 | 2023 | 22/19 | 23/19 | Basis |
| Africa | | 69,020 | 18,826 | 19,850 | 46,946 | 66,376 | -32.0 | -3.8 | 39,458 | 15,049 | 17,996 | 33,421 | 38,211 | -15.8 | -5.8 | |
| North Africa | | 25,622 | 5,575 | 6,570 | 19,104 | 26,891 | -25.4 | 5.0 | 11,586 | 5,569 | 6,212 | 12,484 | 13,997 | 12.2 | 13.1 | |
| Algeria | VF | 2,371 | 591 | 125 | 1,246 | 2,196 | -47.4 | -7.4 | 112 | 43 | 71 | 176 | 151 | 56.4 | 34.8 | \$ |
| Morocco | TF | 12,933 | 2,778 | 3,722 | 10,869 | 14,525 | -16.0 | 12.3 | 8,189 | 3,839 | 3,817 | 9,216 | 10,332 | 18.9 | 32.9 | |
| Sudan | TF | .. | .. | .. | .. | .. | .. | .. | 821 | 689 | 1,077 | 1,065 | .. | 29.6 | .. | \$ |
| Tunisia | TF | 9,429 | 2,012 | 2,474 | 6,438 | 9,371 | -31.7 | -0.6 | 2,463 | 998 | 1,246 | 2,028 | 2,569 | -12.9 | 10.4 | |
| Subsaharan Africa | | 43,398 | 13,251 | 13,280 | 27,842 | 39,485 | -35.8 | -9.0 | 27,873 | 9,480 | 11,785 | 20,937 | 24,214 | -27.5 | -13.6 | |
| Angola | TF | 218 | 64 | 64 | 130 | 134 | -40.5 | -38.6 | 384 | 16 | 22 | 20 | 8 | -94.9 | -98.0 | \$ |
| Benin | TF | 309 | 325 | .. | .. | .. | .. | .. | 240 | 200 | 244 | 241 | .. | 6.7 | .. | |
| Botswana | TF | 1,455 | 329 | 314 | .. | .. | .. | .. | 705 | 115 | 207 | 349 | 393 | -50.5 | -44.2 | \$ |
| Burkina Faso | THS | 143 | 67 | 106 | 116 | .. | -18.9 | .. | 116 | 75 | 82 | 76 | .. | -30.9 | .. | |
| Burundi | TF | .. | .. | .. | .. | .. | .. | .. | 2 | 1 | 1 | 3 | 3 | 22.7 | 63.5 | |
| Cameroon | TF | .. | .. | .. | .. | .. | .. | .. | 653 | 437 | 552 | 541 | .. | -17.2 | .. | \$ |
| Cabo Verde | THS | 758 | 180 | 135 | 785 | 962 | 3.6 | 26.9 | 502 | 159 | 145 | 400 | 546 | -15.2 | 12.5 | |
| Centr. African Rep. | TF | 87 | 35 | .. | .. | .. | .. | .. | 21 | 30 | .. | .. | .. | .. | .. | |
| Chad | THS | 79 | 10 | 40 | .. | .. | .. | .. | .. | .. | .. | .. | .. | .. | .. | |
| Comoros | TF | 45 | 7 | 29 | .. | .. | .. | .. | 72 | 18 | 71 | 84 | .. | 24.6 | .. | |
| Congo | THS | .. | .. | .. | .. | .. | .. | .. | 18 | 4 | 8 | .. | .. | .. | .. | |
| Côte d'Ivoire | VF | 2,070 | 668 | 576 | .. | .. | .. | .. | 448 | 166 | 254 | 335 | .. | -20.5 | .. | |
| Dem. Rep. Congo | TF | 479 | 202 | 382 | .. | .. | .. | .. | 100 | 81 | 108 | .. | .. | .. | .. | \$ |
| Djibouti | TF | 167 | 75 | 114 | 145 | .. | -13.2 | .. | 63 | 30 | 38 | 45 | .. | -27.9 | .. | \$ |
| Equatorial Guinea | .. | .. | .. | .. | .. | .. | .. | .. | .. | .. | .. | .. | .. | .. | .. | |
| Eritrea | VF | .. | .. | .. | .. | .. | .. | .. | .. | .. | .. | .. | .. | .. | .. | |
| Ethiopia | TF | 812 | 271 | 518 | 840 | 1,078 | 3.4 | 32.7 | 786 | 1,033 | 965 | 1,175 | 1,104 | 49.5 | 40.5 | \$ |
| Gabon | TF | .. | .. | .. | .. | .. | .. | .. | .. | .. | .. | .. | .. | .. | .. | |
| Gambia | TF | 620 | 246 | 332 | 570 | .. | -8.1 | .. | 152 | 47 | 57 | 154 | 292 | 1.6 | 91.8 | \$ |
| Ghana | TF | 1,130 | 355 | 624 | 915 | .. | -19.0 | .. | 1,425 | 110 | 567 | 830 | 1,046 | -41.7 | -26.6 | \$ |
| Guinea | TF | .. | .. | .. | .. | .. | .. | .. | 9 | 1 | 13 | 11 | .. | 11.8 | .. | \$ |
| Guinea-Bissau | TF | 52 | .. | .. | .. | .. | .. | .. | 19 | 3 | 16 | .. | .. | .. | .. | |
| Kenya | TF | 1,863 | 542 | 823 | 1,465 | .. | -21.3 | .. | 1,008 | 545 | 843 | 1,107 | 1,019 | 9.8 | 1.1 | \$ |
| Lesotho | TF | .. | .. | .. | .. | .. | .. | .. | 21 | 6 | 10 | 11 | 9 | -48.9 | -54.7 | \$ |
| Liberia | .. | .. | .. | .. | .. | .. | .. | .. | 2 | 4 | 4 | 4 | .. | 130.3 | .. | \$ |
| Madagascar | TF | 384 | 68 | 32 | 132 | 260 | -65.6 | -32.3 | 747 | 145 | 100 | 367 | .. | -50.9 | .. | \$ |
| Malawi | TF | 978 | 199 | 432 | .. | .. | .. | .. | 39 | 26 | 27 | .. | .. | .. | .. | \$ |
| Mali | TF | 217 | 75 | 168 | .. | .. | .. | .. | 235 | 81 | 190 | 142 | .. | -35.6 | .. | |
| Mauritania | TF | .. | .. | .. | .. | .. | .. | .. | 11 | 6 | 4 | 10 | .. | -7.3 | .. | \$ |
| Mauritius | TF | 1,383 | 309 | 180 | 997 | 1,295 | -27.9 | -6.4 | 1,779 | 449 | 366 | 1,468 | 1,900 | 2.8 | 36.3 | |
| Mozambique | TF | 2,019 | 952 | 492 | .. | .. | .. | .. | 252 | 90 | 127 | 200 | 221 | -20.6 | -12.3 | \$ |
| Namibia | TF | 1,596 | 170 | 233 | 461 | .. | -71.1 | .. | 350 | 114 | 129 | 281 | 348 | -9.1 | 27.0 | |
| Niger | TF | 192 | 85 | .. | .. | .. | .. | .. | 116 | 85 | 120 | 121 | .. | 11.3 | .. | |
| Nigeria | TF | 2,005 | 502 | 518 | 528 | .. | -73.7 | .. | 1,449 | 313 | 256 | 1,127 | 672 | -22.2 | -53.6 | \$ |
| Reunion | TF | 534 | 217 | 251 | 495 | 556 | -7.1 | 4.2 | 459 | 181 | 227 | 439 | .. | 1.7 | .. | € |
| Rwanda | TF | 1,544 | 460 | 480 | .. | .. | .. | .. | 458 | 120 | 150 | 400 | 564 | -12.6 | 23.1 | \$ |
| São Tomé & Príncipe | TF | 35 | 11 | 15 | .. | .. | .. | .. | 45 | 16 | 30 | 48 | .. | 6.4 | .. | \$ |
| Senegal | TF | .. | .. | .. | .. | .. | .. | .. | 516 | 123 | 360 | .. | .. | .. | .. | |
| Seychelles | TF | 384 | 115 | 183 | 332 | 351 | -13.6 | -8.7 | 856 | 327 | 588 | 936 | 989 | 9.3 | 15.5 | \$ |
| Sierra Leone | TF | 63 | 24 | 40 | 71 | 51 | 12.7 | -18.6 | 43 | 39 | 23 | 20 | .. | -52.2 | .. | \$ |
| Somalia | .. | .. | .. | .. | .. | .. | .. | .. | .. | .. | .. | .. | .. | .. | .. | |
| South Africa | TF | 10,228 | 2,802 | 2,256 | 5,698 | 8,483 | -44.3 | -17.1 | 8,384 | 2,471 | 2,120 | 4,772 | 5,676 | -35.6 | -13.5 | |
| Eswatini | TF | 680 | 194 | 170 | 393 | .. | -42.2 | .. | 14 | 7 | 8 | 11 | 21 | -20.0 | 50.0 | \$ |
| Tanzania | TF | 1,443 | 592 | 923 | 1,455 | 1,805 | 0.8 | 25.1 | 2,605 | 715 | 1,310 | 2,528 | 3,374 | -2.9 | 29.5 | \$ |
| Togo | THS | 876 | 482 | .. | .. | .. | .. | .. | 149 | 77 | .. | .. | .. | .. | .. | |
| Uganda | TF | 1,543 | 473 | 513 | .. | .. | .. | .. | 1,385 | 562 | 984 | 1,071 | 1,303 | -22.7 | -5.9 | \$ |
| Zambia | TF | 1,266 | 502 | 554 | 1,061 | .. | -16.2 | .. | 819 | 412 | 393 | 829 | 801 | 1.1 | -2.3 | \$ |
| Zimbabwe | VF | 2,294 | 639 | 381 | 1,044 | 1,603 | -54.5 | -30.1 | 279 | 63 | .. | .. | .. | .. | .. | \$ |

Source: UN Tourism

Data as of September 2024

¹ Percent change calculated in local currencies unless Basis column shows "\$" (in USD) or "€" (in EUR). For regions and subregions change is based on local currencies and constant prices.

See Key to abbreviations on page 27.

Middle East

International tourist arrivals and tourism receipts by country of destination

[Download data](#)

| | Indic. | International Tourist Arrivals | | | | | | International Tourism Receipts | | | | | | | | | |
|--------------------|--------|--------------------------------|---------------|---------------|---------------|---------------|--------------------|--------------------------------|----------------|---------------|---------------|----------------|----------------|--|-------------|-------|--|
| | | (thousands) | | | | | % change over 2019 | | (USD millions) | | | | | % change (real) ¹ over 2019 | | | |
| | | 2019 | 2020 | 2021 | 2022 | 2023 | 22/19 | 23/19 | 2019 | 2020 | 2021 | 2022 | 2023 | 22/19 | 23/19 | Basis | |
| Middle East | | 71,620 | 19,433 | 30,488 | 67,977 | 93,472 | -5.1 | 30.5 | 92,029 | 41,925 | 58,474 | 117,848 | 137,413 | 25.0 | 45.5 | | |
| Bahrain | TF | 3,849 | 827 | 2,182 | 3,712 | 5,556 | -3.6 | 44.4 | 4,362 | 4,026 | 4,377 | 4,061 | 4,630 | -6.9 | 6.2 | \$ | |
| Egypt | TF | 12,876 | 3,619 | 7,967 | 11,663 | 14,905 | -9.4 | 15.8 | 13,030 | 4,398 | 8,895 | 12,245 | 14,077 | -6.0 | 8.0 | \$ | |
| Iraq | VF | .. | .. | .. | .. | .. | .. | .. | 3,593 | 955 | 1,963 | 4,739 | .. | 31.9 | .. | \$ | |
| Jordan | TF | 4,488 | 1,067 | 2,012 | 4,277 | 5,345 | -4.7 | 19.1 | 5,786 | 1,409 | 2,758 | 5,808 | 7,399 | 0.4 | 27.9 | | |
| Kuwait | THS | 153 | 86 | 85 | 89 | .. | -41.9 | .. | 700 | 397 | 470 | 1,086 | 1,736 | 56.6 | 151.0 | | |
| Lebanon | TF | 1,936 | 414 | 890 | 1,466 | 1,666 | -24.3 | -13.9 | 8,593 | 2,353 | 3,135 | 5,319 | 5,409 | -38.1 | -37.1 | \$ | |
| Libya | TF | .. | .. | .. | .. | .. | .. | .. | 85 | 28 | .. | .. | .. | .. | .. | | |
| Oman | TF | 2,500 | 622 | 464 | 2,106 | 2,849 | -15.8 | 14.0 | 1,811 | 455 | 403 | 1,572 | .. | -13.2 | .. | | |
| Palestine | THS | 688 | 93 | 123 | 362 | 483 | -47.4 | -29.8 | 726 | 465 | 615 | 677 | 400 | -6.7 | -44.9 | \$ | |
| Qatar | TF | 2,137 | 582 | 611 | 2,560 | 4,054 | 19.8 | 89.7 | 5,442 | 3,563 | 4,263 | 7,262 | 8,848 | 33.5 | 62.6 | | |
| Saudi Arabia | TF | 17,526 | 4,138 | 3,477 | 16,638 | 27,424 | -5.1 | 56.5 | 16,431 | 4,036 | 3,817 | 25,203 | 35,989 | 53.4 | 119.0 | | |
| Syria | TF | 2,424 | 479 | 742 | 1,787 | 2,018 | -26.3 | -16.8 | .. | .. | .. | .. | .. | .. | .. | | |
| Utd Arab Emirates | TF | 21,561 | 7,165 | 11,479 | 22,654 | 28,146 | 5.1 | 30.5 | 30,731 | 19,692 | 27,552 | 49,309 | 51,920 | 60.5 | 69.0 | \$ | |
| Yemen | TF | .. | .. | .. | .. | .. | .. | .. | .. | .. | .. | .. | .. | .. | .. | \$ | |

Source: UN Tourism

Data as of September 2024

¹ Percent change calculated in local currencies unless Basis column shows "\$" (in USD). For regions and subregions change is based on local currencies and constant prices.

See Key to abbreviations on page 27.

Outbound tourism by generating region¹

International tourist arrivals by region of origin¹

| | International Tourist Arrivals (millions) | | | | | % Share | | | | % Change | | | |
|-----------------------------------|---|--------------|--------------|------------|------------|------------|------------|------------|------------|------------|------------|--------------|--------------|
| | 2018 | 2019 | 2020 | 2021 | 2022 | 2019 | 2020 | 2021 | 2022 | 19/18 | 20/19 | 21/19 | 22/19 |
| | World | 1,415 | 1,465 | 406 | 460 | 975 | 100 | 100 | 100 | 100 | 3.5 | -72.3 | -68.6 |
| <i>From:</i> | | | | | | | | | | | | | |
| Europe | 679 | 704 | 236 | 287 | 560 | 48.1 | 58.0 | 62.5 | 57.4 | 3.7 | -66.5 | -59.2 | -20.5 |
| Asia and the Pacific | 370 | 384 | 58 | 32 | 117 | 26.2 | 14.3 | 6.9 | 12.0 | 3.9 | -84.8 | -91.8 | -69.6 |
| Americas | 239 | 245 | 73 | 87 | 190 | 16.7 | 17.9 | 19.0 | 19.5 | 2.2 | -70.2 | -64.4 | -22.4 |
| Middle East | 43 | 47 | 11 | 19 | 45 | 3.2 | 2.6 | 4.1 | 4.6 | 9.1 | -77.1 | -59.3 | -3.3 |
| Africa | 45 | 46 | 12 | 12 | 29 | 3.1 | 3.0 | 2.7 | 3.0 | 1.5 | -72.9 | -72.9 | -36.6 |
| Origin not specified ² | 39 | 39 | 16 | 22 | 34 | 2.7 | 4.0 | 4.8 | 3.5 | .. | .. | .. | ..1 |
| Same region | 1,075 | 1,109 | 325 | 368 | 724 | 75.7 | 80.0 | 80.0 | 74.3 | 3.2 | -70.7 | -66.8 | -34.7 |
| Other regions | 301 | 317 | 65 | 70 | 216 | 21.6 | 16.0 | 15.2 | 22.2 | 5.1 | -79.5 | -78.0 | -31.7 |

Source: UN Tourism

Data as of September 2024

¹ Includes estimates for countries with missing data.

² Arrivals not allocated to a specific region of origin, either because source market data is missing, or it is grouped into a broad category such as 'Other countries of the world'.

Export revenues from international tourism

International tourism in the balance of payments (BOP)

[Download data](#)

Export Revenues from International Tourism*

| | (USD billions) | | | | | % Change (real terms) ² vs 2019 | | | | Share of total exports (%) | | | Share of service exports (%) | | |
|---------------------------------|----------------|--------------|--------------|--------------|--------------|--|--------------|--------------|--------------|----------------------------|------------|-------------|------------------------------|-------------|--------------|
| | 2019 | 2020 | 2021 | 2022 | 2023 | 20/19 | 21/19 | 22/19 | 23/19 | 2019 | 2020 | 2023 | 2019 | 2020 | 2023 |
| World | 1,738 | 656 | 750 | 1,350 | 1,803 | -62.4 | -59.1 | -22.9 | -0.9 | 6.9 | 2.9 | 5.7 | 47.4 | 16.4 | 36.8 |
| Advanced economies ¹ | 1,096 | 425 | 467 | 820 | 1,120 | -61.8 | -59.9 | -24.6 | -2.8 | 6.9 | 3.0 | 5.8 | 39.3 | 14.1 | 30.4 |
| Emerging economies ¹ | 642 | 231 | 283 | 530 | 683 | -63.4 | -57.8 | -20.0 | 2.4 | 6.8 | 2.7 | 5.5 | 73.2 | 23.8 | 56.4 |
| Europe | 699.4 | 292.7 | 384.2 | 657.6 | 791.7 | -57.8 | -47.0 | -3.6 | 6.1 | 6.5 | 3.0 | 5.9 | 34.9 | 14.2 | 31.3 |
| Northern Europe | 125.4 | 52.4 | 64.5 | 132.8 | 149.0 | -58.7 | -53.0 | 9.4 | 11.8 | 6.2 | 2.8 | 5.7 | 23.1 | 9.1 | 21.0 |
| Western Europe | 215.4 | 115.7 | 125.0 | 188.2 | 226.5 | -47.8 | -45.3 | -9.3 | -3.0 | 4.2 | 2.5 | 3.7 | 24.0 | 12.8 | 20.7 |
| Central/Eastern Europe | 86.5 | 34.5 | 42.5 | 67.3 | 82.4 | -59.9 | -53.8 | -25.2 | -11.2 | 4.8 | 2.1 | 3.7 | 46.5 | 17.4 | 31.2 |
| Southern/Medit. Europe | 272.0 | 90.1 | 152.2 | 269.3 | 333.9 | -66.7 | -47.0 | -0.1 | 15.4 | 14.4 | 5.6 | 13.5 | 72.0 | 23.4 | 72.9 |
| - of which EU-27 | 496.9 | 210.9 | 267.6 | 446.9 | 544.8 | -58.4 | -49.3 | -6.9 | 1.7 | 5.2 | 2.5 | 4.4 | 56.6 | 21.8 | 45.0 |
| Asia and the Pacific | 486.8 | 141.7 | 100.7 | 182.3 | 386.5 | -71.0 | -80.3 | -61.8 | -21.2 | 5.8 | 1.8 | 3.7 | 62.0 | 14.9 | 32.5 |
| North-East Asia | 208.1 | 49.1 | 47.7 | 56.1 | 159.5 | -76.7 | -77.8 | -71.5 | -22.6 | 3.8 | 0.9 | 2.4 | 47.5 | 9.3 | 25.2 |
| South-East Asia | 164.3 | 39.5 | 16.5 | 60.4 | 118.3 | -75.9 | -90.2 | -63.1 | -29.9 | 8.8 | 2.3 | 5.0 | 93.3 | 18.4 | 39.0 |
| Oceania | 65.8 | 34.2 | 21.1 | 33.5 | 61.4 | -47.9 | -71.3 | -48.3 | -8.0 | 15.7 | 9.4 | 11.7 | 113.3 | 50.8 | 80.3 |
| South Asia | 48.6 | 18.9 | 15.3 | 32.3 | 47.2 | -61.5 | -69.7 | -34.1 | -3.8 | 6.8 | 3.1 | 4.7 | 43.1 | 13.3 | 26.8 |
| Americas | 386.5 | 143.1 | 164.0 | 313.5 | 400.9 | -62.6 | -59.8 | -24.2 | -1.4 | 8.9 | 3.8 | 7.4 | 54.0 | 17.9 | 40.7 |
| North America | 301.1 | 112.5 | 124.4 | 235.8 | 303.9 | -62.7 | -61.2 | -27.1 | -3.9 | 8.4 | 3.7 | 6.9 | 49.6 | 16.6 | 36.6 |
| Caribbean | 35.9 | 14.6 | 21.3 | 35.0 | 41.0 | -58.8 | -42.9 | -9.9 | 10.0 | 50.3 | 31.8 | 51.3 | 118.2 | 45.8 | 106.8 |
| Central America | 15.9 | 5.0 | 7.9 | 16.4 | 20.3 | -68.5 | -50.6 | -1.1 | 19.8 | 17.4 | 6.6 | 16.5 | 95.8 | 26.3 | 75.7 |
| South America | 33.5 | 11.0 | 10.4 | 26.3 | 35.7 | -63.5 | -69.6 | -25.0 | -1.0 | 5.6 | 2.1 | 4.4 | 55.2 | 15.5 | 40.4 |
| Africa | 48.0 | 18.3 | 21.9 | 40.1 | 46.8 | -61.7 | -57.1 | -17.2 | -5.3 | 9.2 | 4.3 | 7.4 | 75.6 | 25.9 | 57.9 |
| North Africa | 13.9 | 6.4 | 7.3 | 14.4 | 16.4 | -55.4 | -51.0 | 7.6 | 10.0 | 12.5 | 7.4 | 10.5 | 59.5 | 26.5 | 67.7 |
| Subsaharan Africa | 34.0 | 11.9 | 14.6 | 25.7 | 30.4 | -64.3 | -59.6 | -27.4 | -11.5 | 8.3 | 3.5 | 6.4 | 85.0 | 25.6 | 53.7 |
| Middle East | 117.8 | 59.8 | 79.0 | 156.4 | 177.4 | -48.9 | -33.7 | 29.2 | 46.8 | 9.6 | 6.6 | 10.8 | 130.1 | 60.8 | 165.9 |

Source: UN Tourism

Data as of September 2024

¹ Classification based on the International Monetary Fund (IMF).

* Export revenues from international tourism consist of international tourism receipts and passenger transport receipts, the "travel" and "passenger transport" credit items respectively in the BOP.

² In local currencies, constant prices.

Tourism direct gross domestic product (TDGDP)

Direct economic contribution of tourism

[Download data](#)

Tourism Direct GDP

| | (USD billions) | | | | | | Economic contribution (% of GDP) | | | | |
|----------------------|----------------|--------------|--------------|--------------|--------------|--------------|----------------------------------|------------|------------|------------|------------|
| | 2018 | 2019 | 2020 | 2021 | 2022 | 2023(e) | 2019 | 2020 | 2021 | 2022 | 2023(e) |
| World | 3,294 | 3,398 | 1,607 | 1,826 | 2,620 | 3,390 | 3.9 | 1.9 | 1.9 | 2.6 | 3.2 |
| Europe | 977 | 989 | 594 | 745 | 1,005 | 1,106 | 4.2 | 2.6 | 2.9 | 3.9 | 4.0 |
| Asia and the Pacific | 1,246 | 1,193 | 394 | 381 | 557 | 1,084 | 3.9 | 1.3 | 1.1 | 1.6 | 3.1 |
| Americas | 900 | 1,024 | 515 | 557 | 829 | 964 | 3.6 | 1.9 | 1.8 | 2.4 | 2.7 |
| Africa ¹ | 87 | 94 | 56 | 55 | 83 | 85 | 4.3 | 2.7 | 2.4 | 3.4 | 3.5 |
| Middle East | 85 | 98 | 48 | 88 | 146 | 151 | 4.0 | 2.2 | 3.5 | 4.7 | 5.2 |

Source: UN Tourism

Data as of September 2024

¹ Figures for Africa should be interpreted with caution due to limited official data.

(e) Data for 2023 are preliminary estimates.

Note: Tourism direct gross domestic product (TDGDP) measures the direct contribution of tourism to the economy. For more information, please see Methodological notes on page 27.

Methodological notes

Key to abbreviations and symbols

TF: International tourist arrivals at frontiers (overnight visitors, i.e. excluding same-day visitors)
VF: International visitor arrivals at frontiers (tourists and same-day visitors)
THS: International tourist arrivals at hotel and similar establishments
TCE: International tourist arrivals at collective tourism establishments

* = provisional data
.. = data not (yet) available
. = decimal separator
, = thousands separator

Sources

Information in this report reflects data available as of September 2024 in the UN Tourism Market Intelligence, Policies and Competitiveness Department and the Tourism Statistics databases (www.unwto.org/tourism-statistics/tourism-statistics-database) collected by the UN Tourism Market Intelligence, Policies and Competitiveness Department, and the UN Tourism Statistics Department respectively, from national and international sources. For the latest tourism data and market analysis, please see:

- World Tourism Barometer: www.e-unwto.org/loi/wtobarometereng
- UN Tourism Tourism Dashboard: www.unwto.org/tourism-data/unwto-tourism-dashboard

For major concepts, definitions and classifications in the measurement of tourism, please see: International Recommendations for Tourism Statistics 2008 (IRTS 2008) at www.e-unwto.org/doi/book/10.18111/9789211615210 and www.unwto.org/tourism-statistics/standards.

Country notes

Data on international tourist arrivals for France correspond to Metropolitan France.

Information provided by the Russian Federation includes statistical data for the Autonomous Republic of Crimea and the city of Sevastopol, Ukraine, temporarily occupied by the Russian Federation.

Data on international tourism receipts and expenditure for China is based on the balance of payments (BOP) travel credit and debit items (as with other countries for reasons of consistency and international comparability) reported by the State Administration of Foreign Exchange (SAFE) at www.safe.gov.cn/en/BalanceofPayments/. It should be noted that there is a difference in the data used by UN Tourism and those produced by the Ministry of Culture and Tourism (formerly the China National Tourism Administration) for 2014 and subsequent years.

Tourism direct GDP

Tourism direct gross domestic product (TDGDP) is a macroeconomic aggregate that measures the direct contribution of tourism to the economy. It is one of the key indicators used for monitoring progress towards the Sustainable Development Goals (SDGs), specifically on SDG 8, Target 8.9. UN Tourism is custodian to two SDG targets from the Global indicator framework. These are 8.9.1: Tourism direct gross domestic product and 12.b.1: Implementation of standard accounting tools to monitor the economic and environmental aspects of tourism sustainability.

TDGDP is measured using the conceptual framework of Tourism Satellite Accounts (TSA) developed by UN Tourism, the UN Statistical Commission and other international organizations, and described in UNWTO (2010), Tourism Satellite Account: Recommended Methodological Framework (online) available at www.e-unwto.org/doi/book/10.18111/9789211615203. The UN Tourism Statistics Department is responsible for the compilation of TDGDP country data. Please see: www.unwto.org/tourism-statistics/economic-contribution-SDG

Estimates of global and regional TDGDP are based on: 1) Official data reported by individual countries and territories; 2) Estimates resulting from a statistical model (multiple linear regression) for countries with no data; and 3) Estimates for specific years with no data based on estimated nominal change in USD. Aggregates were prepared by the UN Tourism Market Intelligence, Policies and Competitiveness Department and the UN Tourism Statistics Department.

Acknowledgements

This report was prepared by the UN Tourism Market Intelligence, Policies and Competitiveness Department under the supervision of Zoritsa Urosevic, UN Tourism Executive Director, and Sandra Carvão, Chief of the Department. Authors include: Fernando Alonso (data collection and revision), Michel Julian (analysis and drafting), Javier Ruescas (data aggregates, data visualization, analysis and drafting) and Juan Carlos Izurieta (data visualization and layout design). The UN Tourism Statistics Department contributed with some country data.



9 789284 425792



UN Tourism

The World Tourism Organization (UNWTO), a United Nations specialized agency, is the leading international organization with the decisive and central role in promoting the development of responsible, sustainable and universally accessible tourism. It serves as a global forum for tourism policy issues and a practical source of tourism know-how. Its membership includes 160 countries, 6 territories, 2 permanent observers and over 500 Affiliate Members.

www.unwto.org